



JOSLYN
Art Museum



**Travel with Joslyn Art Museum:
St. Louis**

with Annika K. Johnson, Ph.D.,
Associate Curator of Native American Art

June 19–23, 2022



Dear Members and Friends of Joslyn Art Museum,

I hope you will join me for this *Travel with Joslyn Art Museum* trip to St. Louis in June 2022. Located at the confluence of the Mississippi and Missouri Rivers, St. Louis is known as the “Gateway to the West.” It was the starting point of the Lewis and Clark Expedition in 1803 as well as Karl Bodmer and Prince Maximilian’s Missouri River travels 30 years later. The region has attracted travelers since long before French fur traders named a village after their King, Louis IX. A thousand years ago, the Indigenous settlement of Cahokia was one of the largest cities in the world, evidenced by the massive earthen mounds that remain to this day. We will visit this UNESCO World Heritage Site, along with the Saint Louis Art Museum, the Gateway Arch, and many cultural sites that reveal the multifaceted history of the city and region. Our accommodations for the trip will be the charming Chase Park Plaza Royal Sonesta Hotel. Our organizing partner, Arrangements Abroad, will coordinate all aspects of our program.

Space is limited, so reserve your place as soon as possible!

TRIP HIGHLIGHTS

TAKE a private docent-led tour through the Saint Louis Art Museum’s Southwestern Native American Art exhibit, which highlights Indigenous ceramics, textiles, jewelry, and baskets alongside studio-based drawing, printmaking, painting, and photography

JOIN a special guided visit of the Cahokia Mounds State Historic Site in Collinsville, Illinois, and explore why UNESCO recognized this vast city, the largest pre-Columbian settlement north of the Rio Grande

GO behind the scenes with a docent at the Missouri Historical Society’s Library and Research Center, seeing historical artifacts not usually on public display in this extensive facility

DELIGHT in an exclusive exploration of the Tadao Ando-designed Pulitzer Arts Foundation, an inviting, fascinating space that seamlessly integrates international art exhibitions—featuring works ranging from Old Master paintings to modern and contemporary artworks—with Ando’s innovative architecture

ENJOY an exclusive, curator-led tour amid the greenhouses and diverse flora at the Missouri Botanical Garden—second only to the New York Botanical Garden in size in North America—followed by a special farewell dinner on the grounds

Sincerely,

Annika K. Johnson, Ph.D.
Associate Curator of Native American Art
Joslyn Art Museum

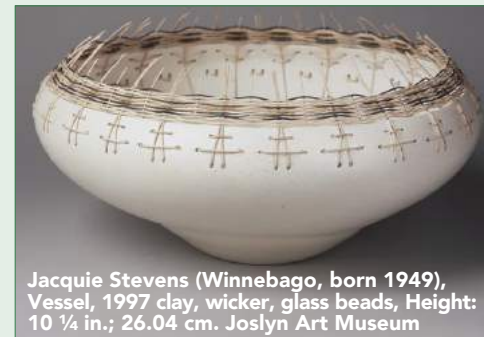
TRAVELING WITH YOU



Annika K. Johnson, Ph.D.

is the Associate Curator of Native American Art at Joslyn Art Museum, where she oversees a diverse collection of Indigenous arts from across North America. Since joining the Museum in 2019, Dr. Johnson has engaged regional Indigenous

communities on numerous Museum projects. Her recent exhibition *Faces from the Interior: The North American Portraits of Karl Bodmer* focused on portraits of Native Americans drawn from Joslyn’s renowned Maximilian-Bodmer collection, and included filmed interviews with tribal elders and artists. In 2021, she curated an immersive installation featuring the work of Wendy Red Star for Joslyn’s Karen and Doug Riley Contemporary Artists Project (CAP) Gallery. Johnson has held fellowships at the Smithsonian American Art Museum and the Center for Advanced Study in the Visual Arts, and received her Ph.D. in art history from the University of Pittsburgh with a focus on 19th-century Plains art.



Jacque Stevens (Winnebago, born 1949),
Vessel, 1997 clay, wicker, glass beads, Height:
10 ¼ in.; 26.04 cm. Joslyn Art Museum

Travel with Joslyn Art Museum: St. Louis

June 19–23, 2022



Forest Park, photo by Keith Yahl

SUNDAY, JUNE 19: ARRIVAL IN ST. LOUIS, MO

Arrive in St. Louis and check into the Chase Park Plaza Royal Sonesta Hotel in beautiful Forest Park. This afternoon, visit the Saint Louis Art Museum, the only remaining structure from the city's 1904 World's Fair. The museum is home to an extensive collection of antiquities, from classic to modern. Enjoy a private docent-led tour through the museum's Southwestern Native American Art exhibit before free time to explore other parts of the museum on your own. This evening, join the group for a specially arranged, private welcome reception and dinner. R,D

MONDAY, JUNE 20: ST. LOUIS

This morning, travel the short distance across the Mississippi to the town of Collinsville, Illinois. There, you will have a special guided visit at the Cahokia Mounds State Historic Site. During pre-Columbian times, this UNESCO World Heritage Site was one of the largest cities in the world, surpassing even London. Afterwards, return to St. Louis for a late lunch and a visit to the Gateway Arch National Park, on the banks of the Mississippi. Enjoy a visit

to the Gateway Arch's museum, which charts the roles of St. Louis and Native American communities in America's westward expansion. There will be time for those that choose to travel to the top of the Arch, the Western Hemisphere's highest monument. The rest of the afternoon and evening are free to enjoy on your own. B,L

TUESDAY, JUNE 21: ST. LOUIS

This morning, return to Forest Park for a visit to the Missouri Historical Society's Library and Research Center. You will delight in a unique, docent-led, behind-the-scenes opportunity to view its historical artifacts not generally on display. Following your visit, you will enjoy lunch in the museum's restaurant, Panorama. This afternoon, venture to the Pulitzer Arts Foundation for a special visit. Presenting contemporary and historic art in dialogue with its celebrated Tadao Ando-designed building, the Foundation's exhibitions and programs inspire new ideas and perspectives. Meet with the curators for a special informative program. This evening, dinner is at leisure. B,L

Saint Louis Art Museum, photo by Sharon Mollerus



Pulitzer Arts Foundation, photo by chaotic float



Missouri Botanical Garden, photo by AaronCarlson

WEDNESDAY, JUNE 22: ST. LOUIS

Start the day with a visit to the historic Campbell House Museum, which offers an in-depth view of the immigrant experience in the 19th century. Built in 1851, the Campbell House was the first house in the elegant Lucas Place neighborhood. Later, it was the home of renowned fur trader and entrepreneur Robert Campbell and his family from 1854 until 1938. The museum contains hundreds of original Campbell possessions including furniture, paintings, clothing, letters, carriages and a unique set of interior photographs taken in the mid-1880s. This evening, embark on an exclusive tour of the Missouri Botanical Garden, with a special farewell dinner on the grounds. B,L,D

THURSDAY, JUNE 23: ST. LOUIS / RETURN

Depart the hotel early this morning for flights home. B

DISCLAIMER: The itinerary is subject to change at the discretion of the Joslyn Art Museum and Arrangements Abroad. For complete details, please carefully read the terms and conditions at www.arrangementsabroad.com/terms.

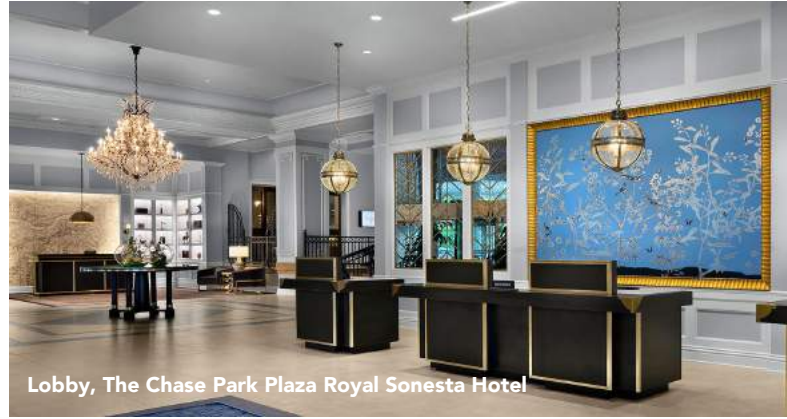


Gateway Arch museum, photo by Sophia Lucero

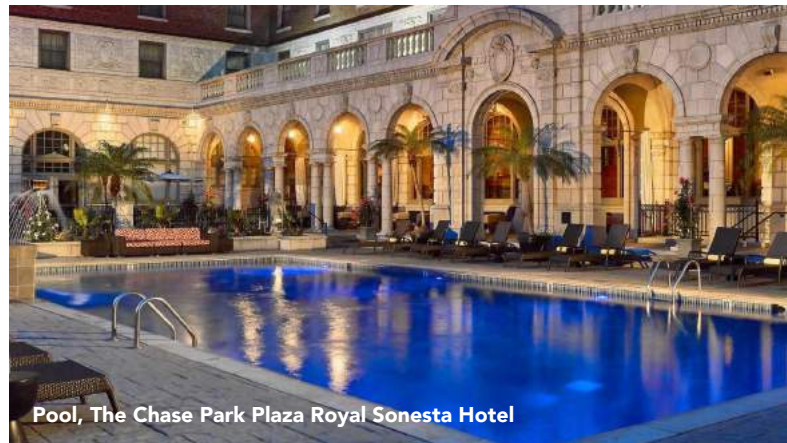
ACCOMMODATIONS

THE CHASE PARK PLAZA ROYAL SONESTA HOTEL

The Chase Park Plaza brings elegant style and old-world glamour to St. Louis. Discover luxurious amenities and service in the grandest of hotel traditions. This regal, Art Deco building has a celebrated history dating back to 1922. Complimentary Wi-Fi is available.



Lobby, The Chase Park Plaza Royal Sonesta Hotel



Pool, The Chase Park Plaza Royal Sonesta Hotel

PROGRAM RATE

\$3,299 per person, double rate

\$3,999 single rate

RATE INCLUDES

- Four nights accommodations as per itinerary
- Meals as indicated in the itinerary (B=Breakfast, L=Lunch, R=Reception, D=Dinner); bottled water, soft drinks, juices, and coffee/tea with all meals; house wine at welcome and farewell dinners
- Enrichment program of lectures and talks
- Escorted sightseeing by private motor coach and entrance fees for included visits
- Taxes, service, and portage charges
- Gratuities to local guides and drivers
- Personal protective materials, including masks, hand sanitizer, wipes, and gloves

NOT INCLUDED IN RATE Airfare; passport/visa fees; meals not specified; alcoholic beverages other than noted in inclusions; personal items and expenses; airport transfers; excess baggage; trip insurance; any other items not specifically mentioned as included.



JOSLYN ART MUSEUM
TRAVEL WITH JOSLYN ART MUSEUM: ST. LOUIS • JUNE 19 – 23, 2022
RESERVATION FORM

To reserve a place, please call Arrangements Abroad at phone: 212-514-8921 or 800-221-1944, fax: 212-344-7493; or complete and return this form with your deposit of \$1,000 per person (**fully refundable until 120 days prior to departure**) payable to *Arrangements Abroad*. Mail to: Arrangements Abroad, 260 West 39th Street, 17th Floor, New York, NY 10018-4424.

Name(s) in full as on passport(s). Please print.

Address

City

State

Zip

Telephone (home)

(business)

Fax

E-mail

ACCOMMODATIONS

Hotel room preference One bed Two beds Single

I wish to share a room with _____

FORM OF PAYMENT

Enclosed is my check (payable to *Arrangements Abroad*) Debit card Credit card

Name on debit/credit card

Debit/credit card number

3- or 4-digit security code

Expiration date

I/We confirm that I/we have carefully read and agree to the *Terms & Conditions* of this Program (see www.arrangementsabroad.com/terms to review or call for a copy). I/We agree to full payment 120 days prior to departure. Each participant must sign below.

Signature (required)

Date

Signature (required)

Date