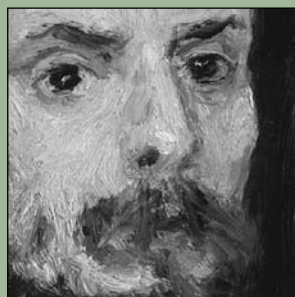




# Joslyn Art Museum

2007 ANNUAL REPORT





## YEAR AT A GLANCE

- 201,021 visited Joslyn Art Museum.
- 293 works of art were acquired by Joslyn Art Museum through gift or purchase in the following areas: Modern and Contemporary (142); American (140); European (8); and Asian (3).
- 60 works of art were lent by Joslyn to other institutions.
- 28 works of art were lent by other institutions and individuals to Joslyn's permanent collection.
- 10 special exhibitions were on view at the Museum.
- 38,774 attended tours, lectures, gallery talks, special programs for adults, art classes, camps, and other programs at Joslyn.
- The Museum ended the year with 5,971 membership households and an additional 10,000 members through the Passport Partners program.
- 46,298 attended music programs at Joslyn.
- 68,041 participated in Joslyn outreach programs.
- Volunteers logged 7,855 hours of service for the Museum's Art Reference Library; Museum Shop; Joslyn Art Museum Association events; Young Art Patrons events; and Membership, Education (including the docent program), and Marketing and Public Relations departments (including music series and visitor services).
- Joslyn's Abrahams Library acquired 699 new volumes, and there were 258 outgoing interlibrary loans.
- Joslyn Art Museum receives numerous requests from around the world for images of art works from its permanent collection. These images are used in textbooks, exhibition catalogues, books, and other publications; featured on posters, cards, and calendars; and used in films, videos, or television programs. In 2007, there were 77 completed reproduction requests, 46 of which were for works by Karl Bodmer.



Annual Report  
January 1 - December 31, 2007

Joslyn Art Museum  
2200 Dodge Street  
Omaha, Nebraska 68102-1292

Telephone 402-342-3300  
Facsimile 402-342-2376  
[www.joslyn.org](http://www.joslyn.org)

Museum Hours  
Tuesday-Saturday 10 am-4 pm  
Sunday noon-4 pm  
Closed Monday and major holidays.  
Extended hours for some special exhibitions.

Museum Admission  
\$7 adults; \$5 senior citizens (62+) and college students (with ID); \$4 ages 5-17; free for children ages four and younger and Joslyn members. Group rates available. Public admitted free Saturdays 10 am-noon, funded by a grant from the Peter Kiewit Foundation. Additional charge for some special exhibitions.

ON THE COVER, TOP TO BOTTOM: *Élisabeth Louise Vigée Le Brun* (French, 1755–1842), *Portrait of Marie Antoinette, Queen of France (detail)*, ca. 1788, oil on canvas, Collection of New Orleans Museum of Art; *Käthe Kollwitz* (German, 1867–1945), *Woman in the Lap of Death (Tod mit Frau im Schoss) (detail)*, winter 1920/21, woodcut, Museum purchase with funds provided by Patricia and Charles Lontor in honor of Penelope Smith, and the Art Purchase Fund; *Pierre-Auguste Renoir* (French, 1841–1919), *Self Portrait (detail)*, 1875, oil on canvas, Sterling and Francine Clark Art Institute; *Gorham Manufacturing Company*, *Beaux-Arts Punch Bowl (detail)*, 1893, silver and silver gilt, Gift of a former Nebraskan

ABOVE RIGHT, TOP TO BOTTOM: *College Night*, February 16; *Spared from the Storm Family Fun Day*, September 9; *George Sugarman* (American, born 1912), *Yellow Ascending*, 1977, painted steel, Museum purchase in memory of Leo A. Daly, 1983, Collection of Joslyn Art Museum, newly conserved and sited in Joslyn's future Discovery Garden, October 10; *Dancing on the grand staircase at Jazz on the Green*, August 23

## BOARD OF GOVERNORS

### **Executive Committee**

James R. Young  
*Chairman*

John E. Gottschalk  
*Vice Chairman*

Bruce R. Lauritzen  
*Secretary*

David A. Rismiller  
*Treasurer*

Charles F. Heider  
John P. Nelson  
John P. Schlegel, S.J.  
Walter Scott  
Frederick J. Simon  
Nancy C. Webster  
Michael B. Yanney

Marian Andersen  
Robert D. Bates  
Cynthia Bay  
Susan Butler  
Barbara Call  
J. Brad Chapman  
Mary Daugherty  
William Donaldson  
Admiral James O. Ellis, Jr.,  
    USNR  
Steve Erwin  
Marshall Faith  
Rex Fisher  
Norma Fuller  
Wayne Gary Gates  
Elinor Greenfield  
Sharon Griffin  
Marianne Hawkins  
Howard L. Hawks  
David Jacobson  
Kirk Kellner

Mary Landen  
Melissa Marvin  
Frank Matthews  
Beverly Maurer  
Michael McCarthy  
Cynthia McGowan  
Terry Moore  
Daniel Neary  
Diane Nelson  
Rubens J. Pamies, M.D.  
Lenore Polack  
Karen Riley  
Thompson Rogers  
Suzanne Scott  
W. David Scott  
William S. Singer, M.D.  
Allan Tubach  
David Wiesman  
Philip J. Willson  
John K. Wilson

Sylvia B. Cohn  
*Lifetime Member*

Harold W. Andersen  
*Governor Emeritus*

## YEAR IN REVIEW



Joslyn Art Museum completed its 75th anniversary year with many exciting and some remarkable achievements, thanks to the dedication and generosity of the Board of Governors, patrons, volunteers, and members, and the hard work of staff.

The long awaited and much discussed strategic plan, the first such comprehensive approach to the Museum's operations and programs in recent memory, approved by the Board in December 2006, was advanced. The plan identifies several areas of excellence, among them Joslyn's Margre H. Durham Center for Western Studies and the Museum's award-winning education programs. The strategic plan also establishes specific goals and objectives in all areas of the Museum. In 2007, the implementation component of the plan was drafted, and staff began to make progress toward reaching the outlined goals.

The Museum began a major improvement of the grounds in 2007. The exciting sculpture garden and campus redevelopment project broke ground in April, and phase one of this two and a half year undertaking was completed in the fall, including a new parking garden, the new entrance off of Dodge Street, an enhanced 24th Street entrance, landscaping, and other amenities. Kenneth Snelson's *Able Charlie* (1983) has been newly



View of Joslyn's new parking garden, looking west, October 10

sited at the 24th Street entrance. George Sugarman's refurbished *Yellow Ascending* (1977) is now situated north of the Museum in what will become the Discovery Garden. John Henry's untitled red metal sculpture (1981) commands a prominent spot in the parking garden. Phase two, including the creation of the Garden and Garden Plaza spaces, water features, and the addition of more sculpture, will begin in spring 2008.

On the occasion of the conservation and reinstallation of the Sugarman sculpture, Joslyn's Contemporary Art Society welcomed Holliday T. Day, former curator of

contemporary art at Joslyn, as guest speaker at its Annual Dinner. She discussed Sugarman's career and the Joslyn work, *Yellow Ascending*.

I am especially thrilled with the new, elegant, and expanded Museum Shop and enhanced Visitor Services Center, completed in November and made possible through the generosity of Suzanne and Walter Scott. The new Shop features much more room for merchandise, updated and attractive décor, and a lighted glass wall for display of fine objects. A Grand Opening Celebration on November 15 featured over a dozen local and regional jewelry and glass artists and other craftsmen showcasing their merchandise. The new Visitor Services Center better serves incoming visitors with a flat panel screen behind the desk that promotes current and upcoming events, a new area for lockers and wheel chairs, and a new coat room.

Joslyn's three major exhibitions — *Collecting the Impressionists*, *Spared from the Storm*, and *The Art of Robert Bateman* — helped the Museum exceed 200,000 visitors in 2007. From the Clark Art Institute, *Collecting the Impressionists* was a small but mighty presentation of 12 exceptional examples of Impressionist painting by Degas, Manet, Monet, Morisot, Pissarro, and Renoir. Michael Conforti, Director of the Clark, was on hand for the Director's Preview, more than 1,000 attended the Members Preview, and a related *Family Fun Day* drew 1,400 guests. Complementing the exhibition was *Paris Revealed: Impressions from the 19th Century*, a selection of about 45 French prints and posters from Joslyn's collection as well as promised gifts from private lenders, including works by Daumier, Degas, Manet, Pissarro, and Toulouse-Lautrec.

*Spared from the Storm* alone received more than 100,000 visitors during the summer and fall. These included 81 school groups and nearly 1,000 guests at a free *Family Fun Day* celebration in September. Joslyn welcomed visitors from all 50 states, the District of Columbia, and eight foreign countries during the show, including H.S.H. Prince Albert II of Monaco! The exhibition of important and rare 17th– through mid 20th–century works from the New Orleans Museum of Art (NOMA) came about when I became aware that John Bullard, NOMA's director and a friend of mine, was willing to loan prized works from their collection to other museums in exchange for much needed funds as they returned to normal operations following the devastation of Hurricane Katrina. I eagerly pursued his offer and as a result, Joslyn was the first museum to present the NOMA masterworks to a larger audience. The Joslyn Art Museum Association, with honorary chairmen Gail and Michael Yanney, put on an extraordinary and lively Gala with "Festivities Fit for the French Quarter" in honor of the show. Bullard was our special guest, and he was thrilled to see his "children," as he refers to the NOMA works, looking so exquisite in Joslyn's galleries. Unique programming included a series of presentations about New

Orleans art and culture as well as Hurricane Katrina's impact on the city. Further, the summer's *Jazz on the Green* concert series, in a tribute to the Crescent City, included rousing performances by Big Red & the Zydeco Playmakers of Hillister, Texas, and, from Bourbon Street in New Orleans, Dwayne Dopsie & the Zydeco Hellraisers.

Thanksgiving weekend marked the U.S. debut of *The Art of Robert Bateman*, on view through early 2008. Opening day attendance soared to nearly 1,000. On November 30, more than 200 attended "An Evening with Robert Bateman," a special chance to meet and hear the artist. My thanks to Mary and Joseph Daugherty who were event sponsors. This retrospective exhibition is a major tribute to Bateman, one of the world's foremost wildlife artists, and the second time Joslyn has showcased Bateman's work (1987's *Images of Nature: The Work of Robert Bateman* was the first exhibition of Bateman's paintings in Nebraska). Complementing the Bateman exhibition is a small show from the permanent collection of Karl Bodmer's detailed studies of animals he encountered during his 1832–1834 North American expedition with Prince Maximilian of Wied.

Joslyn's print gallery showcased numerous exhibitions of important works on paper, including Stan Strembecki's photographs of books washed from a New Orleans school library by flood waters in the aftermath of Hurricane Katrina and Charles Guildner's images of working cattle ranches in Nebraska. The Mind's Eye Gallery opened a new exhibition, *SPEAK!*, of original drawings, paintings, and mixed-media works — delightful illustrations of children's book illustrators' favorite dogs. *SPEAK!* is the first in a series of exhibitions that pair stories and art that will continue in 2008.

Gifts of art to the Museum built on areas of excellence in Joslyn's collection. A Museum purchase with funds from Suzanne and Walter Scott is the three-volume masterpiece *History of the Indian Tribes of North America*, McKenney and Hall's 1836–1844 prints of Native American notables after Charles Bird King's originals paintings. To the photography collection comes *Lives of Tradition*, a suite of photographs, including portraits and landscapes, by Charles Guildner, a Joslyn purchase with funds from Carmen and John Gottschalk. A magnificent Gorham silver Beaux-Arts punch bowl from the 1893 Columbian Exposition in Chicago is an anonymous gift from a former Nebraskan. A complete 10-sculpture edition of bronzes from contemporary artist John Coleman's Bodmer–Catlin Series is a gift from Mr. and Mrs. Joe Ricketts. The artist and his wife were special guests at the Bodmer Society's annual *Rendezvous!* event on November 8.

I am pleased to announce that Bill Foxley has extended the loan of 30 American Western masterpieces from his private collection to Joslyn for another year. The works were part of the popular *Legends of the West* exhibition that concluded early in February. The Field Museum of Chicago has placed two more paintings by

George Catlin on long-term loan to Joslyn. The paintings join two other Catlin works from the Field in the Lauritzen Gallery and greatly enhance our American Western galleries. Also in the Lauritzen Gallery is a group of paintings by 10 members of the Taos Society of Artists, on loan from the private Olson Family Collection (Palm Desert, CA, and Boulder, CO).

Loans of Joslyn works originating in 2007 included Frederick Childe Hassam's *April Showers — Champs Elysées, Paris* and Eanger Irving Couse's *The Cowherd to the Naples Museum of Art* (Naples, FL); Claude Lorrain's *Rest on the Flight into Egypt* to the High Museum of Art (Atlanta, GA) and the Denver and Seattle Art Museums; John Sloan's *Sunset, West Twenty-third Street* to the Delaware Art Museum; and Martin Puryear's *Self* to the Museum of Modern Art, New York, the Modern Art Museum of Fort Worth (TX), and the National Gallery of Art.

In conservation news, Joslyn sent Titian's *Giorgio Cornaro with a Falcon* to The Getty Conservation Institute (Los Angeles, CA) in October for treatment, after which it will be placed on view in the J. Paul Getty Museum's galleries for six months alongside three other paintings by the artist. I am excited about this conservation partnership, and we will look forward to the return of the refurbished Titian, one of the most important works in our collection.

In publications news, Joslyn's *Thomas Moran's West*, written by Joni Kinsey, was named "Best Western Art Book" of 2006 by the National Cowboy and Western Heritage Museum (Oklahoma City, OK). We received word of the award early in 2007.

This year marked the beginning of a very solid and significant partnership between Joslyn and the city of Xalapa, the newest of Omaha's five sister cities and the capital of the State of Veracruz, Mexico. At the heart of the fruitful partnership are exhibition exchanges between Joslyn and museums in the State of Veracruz. In June, we began the collaboration by sending 30 wonderful works to Xalapa's Pinacoteca Diego Rivera for the exhibition *European Traditions: Nineteenth-Century Paintings from Joslyn Art Museum*. In turn, the governor of the State of Veracruz has agreed to a more-than-30-painting exhibition by Mexican master Diego Rivera from the collection of the Museum of Art of the State of Veracruz (Orizaba, Mexico), at Joslyn in the fall of 2008. This will be followed by what we anticipate to be a truly incredible exhibition of archaeological objects of early Olmec and ancillary cultures from the Museum of Anthropology of Xalapa in 2009. These and other important offerings will punctuate Joslyn's Latino initiative that will be introduced in 2008.

Joslyn's education programs and activities continued with unabated success in 2007. Most notable was the launch of the Museum to the Classroom initiative, supported through a generous lead gift from Richard Holland and the Holland Foundation as well as a generous

grant from Carmen and John Gottschalk. Additional support is provided by an anonymous donor. Three interrelated programs comprise this initiative — Third Thursdays for Teachers, Joslyn World Wide, and a new Teacher Resource Center. Joslyn World Wide video conferencing and distance learning programs are supported by grants from the C. C. and Mabel Criss Foundation and the Hitchcock Foundation. The pilot year of the Museum to the Classroom's Third Thursdays for Teachers is dedicated to the Omaha Public Schools (OPS) and began in October. OPS teachers are invited to a teacher-training seminar the third Thursday evening of each month during the academic year. Each session focuses on one work of art in Joslyn's collection. Teachers work directly with Joslyn staff, guest lecturers, internationally recognized educators, artists, and curators, learning ways to use the art in the classroom through lectures, discussions, tours, demonstrations, and hands-on activities. Each school receives a framed, high-quality color reproduction of each session's focus painting (nine in all for 2007–2008), created using the giclée printing process by nationally known photographer Patrick Drickey, along with a laminated version, complete with lesson plans and instructions for classroom use. In 2008, the wonderful in-house Teacher Resource Center will open its doors, by appointment, to educators. Also in 2008, Joslyn World Wide video conferencing and distance learning program, focusing on Joslyn's collection of American Western art including the Maximilian–Bodmer Collection, will bring thousands of students and Joslyn Art Museum together, virtually.



Omaha Public Schools teacher Jutta Schubert teaches *Standing Bear Elementary School* students using a reproduction of *Gérôme's The Grief of the Pasha* her school received through the Third Thursday for Teachers program.

In the galleries, two new programs celebrate art and storytelling. *Story Adventures* for preschoolers, a collaboration with the Omaha Public Library, nurtures young children's love of art and stories. Each month, guests from the Library read aloud thematic stories in the galleries while focusing on one work of art in the permanent collection. *Picture This!* is a monthly event for all ages with professional storyteller Rita Paskowitz. Participants create original, collaborative stories based on artworks in the galleries.

Exciting lectures included the Joslyn Art Museum Association's (JAMA) annual *Lecture Luncheon* in October featuring writer Deborah Davis, author of *The New York Times* bestseller *Strapless: John Singer Sargent and the Fall of Madame X*. Davis talked about the infamous "Madame X" — Virginie Gautreau of New Orleans — and

about Sargent's most famous painting. My congratulations to JAMA for a highly successful event attended by nearly 400 guests.

Earlier in the year, Joslyn presented its first-ever Saturday night public lecture featuring Colonel Matthew Bogdanos and his book *Thieves of Baghdad: One Marine's Passion to Recover the World's Greatest Stolen Treasures*. The talk, book signing, and reception were overwhelmingly popular, with more than 640 attending. Held in January, Colonel Bogdanos' presentation was the first in a series of special events and programs planned in honor of Joslyn's 75th anniversary. Refer to the special section beginning on page six for a review of the year-long celebration, including the new *Art After Dark* outdoor cinema series. In collaboration with the Library of Congress American Memory project, *Art After Dark* celebrated over a century of American moviemaking with feature films, shorts, and animated films from the National Film Registry, the Roland Collection of Films and Videos on Art, and the prestigious National Film Board of Canada. More than 5,600 guests gathered with lawn chairs and blankets for the four free evenings in September as the films were projected on a giant screen on the Museum's east wall.

I am delighted to report that Sarah L. Burt has been appointed Joslyn's new Richard and Mary Holland Curator of American Western Art and Curator of American Art. Previously Burt was the projects manager for 10 years at the Georgia O'Keeffe Foundation in Abiquiú, New Mexico. Concurrent with her position at the Foundation, Burt worked for seven years as in-house art historian for William R. Talbot Fine Art, a Santa Fe gallery specializing in the art and history of the Transmississippi West. It was at William R. Talbot that she developed an expertise in art of the American West. Burt will begin at Joslyn on February 1, 2008.

Additionally, Joslyn welcomes four new members to the Board of Governors, all to begin their terms in 2008. They are retired cattleman and art collector William C. Foxley of the Foxley Cattle Company, a long-time Joslyn Art Museum friend and collaborator; Rachael Waitt Moreano, a teacher with Omaha Public Schools; Bryan E. Slone, a partner with Deloitte Tax, LLP; and G. Woodson Howe, retired senior vice president of the *Omaha World-Herald*. Woody Howe previously served on the Board from 1980 to 1984 and again from 1987 to 2005. We are thrilled he is back.

Finally, I am pleased to say that, through the generosity of our Board and donors, the Museum reached year end with a balanced operating budget. I invite you to read on for detailed departmental information and financial data contained in this report. My thanks to our Board of Governors and chairman Jim Young, the Joslyn Art Museum Association and president Karen Sundell, and Joslyn staff, donors, members, and volunteers for an outstanding 75th-anniversary year.

J. Brooks Joyner  
Director

## 75TH ANNIVERSARY EVENTS & PROGRAMS

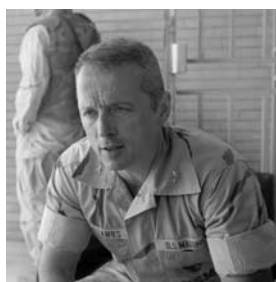


The opening of the Joslyn Memorial on November 29, 1931, gave Omaha a sensational cultural building that, 75 years later, remains an exceptional educational and community resource and a gathering place at the heart of Omaha's cultural life. In November 2006, the Museum began its diamond jubilee year with a gala concert, public concert, members event, and family festival. In 2007, the anniversary celebration continued with special programs planned through September: *Celebrate Our Collections* (January-March); *Celebrate Special Exhibitions* (April-June); *Celebrate Our Building, Campus, & Community Partnerships* (July-September).

### Celebrate Our Collections

#### ***The Thieves of Baghdad with Colonel Matthew Bogdanos – January 27***

More than 640 attended this unprecedented Saturday evening lecture event featuring Colonel Matthew Bogdanos (right; photo by Ozier Muhammad, *The New York Times*), author of the critically-acclaimed book *Thieves of Baghdad: One Marine's Passion to Recover the World's Greatest Stolen Treasures*, in an exclusive engagement. He spoke about the looting of the Iraq National Museum, his team's recovery of thousands of priceless antiquities, and the impact of museum collections upon a nation's cultural identity.



#### ***Family Fun Day – February 11***

More than 1,000 attended this free event celebrating the Museum's recent acquisition of a rare, Chinese imperial screen and the arts of Asia. Art-making included calligraphy and origami. The spectacular Lion Dance was performed by the Lion Troupe of Lincoln's Asian Community and Cultural Center, and Kokyo Taiko, also of Lincoln, demonstrated thunderous and powerful Wadaiko — Japanese style drumming (above).



#### ***75th Anniversary Family Festival ~ Celebrate Collecting – March 31***

This free event showcased area school children's collections of rocks, coins, sports cards, comic books, and more. More than 800 visitors learned how museums acquire



and care for collections and how they exhibit and share them with the public. Children "became collectors," practicing what they'd learned by using simple objects — buttons! — to create and display a collection (left).

### ***Guided Public Tours ~ A Passion for Collecting – Select Wednesdays and Saturdays***

Special 75th anniversary guided public tours were offered in celebration of the permanent collection. Guests learned about the Chinese imperial screen recently acquired by Joslyn, as well as the Museum's Francis T. B. Martin and Maximilian-Bodmer Collections.

### Celebrate Special Exhibitions

#### ***Family Fun Day – April 22***

Nearly 1,400 enjoyed this free afternoon celebrating the exhibition *Collecting the Impressionists*. Visitors heard 19th-century music performed in the galleries by the DeBrodiez Quartet. The Omaha Theater Ballet Youth Ensemble performed, inspired by *The Dancing Lesson* by Edgar Degas (detail at right; c. 1880, oil on canvas, *Sterling and Francine Clark Art Institute*); Miss Clavel (portrayed by Wendy Eaton) read aloud Ludwig Bemelmans' much-loved *Madeline* storybooks; art-making included painting landscapes and creating pastel still lifes; and the new Impressionism Discovery Cart was introduced.



#### ***The Impressionists: An Evening of Music, Poetry, & Painting – April 26***



Guests relived the French Impressionist period with soprano Charlotte Shields (left), pianist Michael Cotton, and flautist Shelly Monier. The program celebrated the exhibition *Collecting the Impressionists* and highlighted turn-of-the-century composers, poets, and artists, followed by a reception.

#### ***Exhibition as Inspiration Panel Discussion – May 3***

This free event brought together five curators from area arts institutions for a behind-the-scenes glimpse into the exhibition process, from concept to installation. Hosted and moderated by John Wilson, Ph.D., Joslyn's Director of

Curatorial Affairs (*below, second from right*), the panel included (*below, left to right*) Jeremy Stern, Bemis Center for Contemporary Arts; Neville Murray, Love's Jazz & Arts Center; Dan Siedell, Sheldon Memorial Art Gallery, University of Nebraska-Lincoln; Dr. Wilson; and Magdelana Garcia, El Museo Latino.



### **75th Anniversary Family Festival ~ Celebrate Exhibitions – May 12**

Attended by 968, this free event for families showcased the exhibition *Collecting the Impressionists* on its final weekend. Inspired by Degas' *The Dancing Lesson*, children practiced



figure drawing from a live model. Families participated in "Exhibitions 101" — a crash course on exhibition presentation. After learning the "business" of museum exhibitions — from research and writing, shipping and security, to exhibition layout and lighting,

marketing and more — children "installed" their own mini-gallery with tiny reproductions of Joslyn paintings.

### **Guided Public Tours ~ How Do Museums Do That? A Closer Look – Select Wednesdays**

Special 75th anniversary guided public tours were offered in celebration of the special exhibitions on view in May and June.

## **Celebrate Our Building, Campus, & Community Partnerships**

### **An Architectural Tour of Joslyn Art Museum: Building, Campus, and Sculpture Garden – July 24**

An extraordinary example of Art Deco architecture, Joslyn's building is a work of art in itself. Participants enjoyed cocktails and appetizers followed by an architectural walking tour of the Museum — inside and out — with Director J. Brooks Joyner (*right*).



### **State of the Art: Community Forum on Architecture and Design Innovation – August 26**

This free panel discussion, organized in partnership with HDR Architecture and Design Alliance OMAh,



joined together distinguished architects from a variety of firms and with differing philosophical perspectives for a look at major projects impacting our community.

### **Art After Dark – Thursdays, September 6–27**

Joslyn's 75th-anniversary outdoor cinema program in collaboration with the Library of Congress American Memory project, *Art After Dark* celebrated over a century of American movie making. Preceded by shorts



and animated films, the movies, including *The Rocky Horror Picture Show* and *The Sound of Music*, were projected on a large screen on the Museum's east wall.

### **75th Anniversary Omaha Public Schools Open House - September 27**

Students, families, and staff from six neighboring Omaha Public Schools were invited to celebrate "community partnerships" at Joslyn. Participants enjoyed guided tours of the collection and the exhibition *Spared from the Storm*, live Dixieland music, art-making activities including making paper models of the Museum building and drawing from observation in the galleries, and refreshments.

### **Guided Public Tours ~ Focus on Joslyn: The Art of Architecture – Select Wednesdays**

Special 75th anniversary guided public tours were offered highlighting the relationship between architecture and art at Joslyn.

## EXHIBITIONS

Exhibitions organized by Joslyn, or in collaboration with Joslyn, are denoted with an asterisk (\*).

### Exhibitions on view at Joslyn:

#### *The Beautiful Line\**

January 6 – April 15

#### *Collecting the Impressionists: Masterpieces from the Sterling and Francine Clark Art Institute*

March 24 – May 13

#### *Paris Revealed: Impressions from the 19th Century\**

March 24 – May 13

#### *The Initiated Eye: Symbols, Freemasonry and the Architecture of Washington, DC, with Paintings by Peter Waddell*

April 28 – June 10

#### *Stan Strembicki: Lost Library Portfolio\**

June 16 – September 16

#### *Spared from the Storm: Masterworks from the New Orleans Museum of Art\**

June 16 – October 21

#### *Charles Guildner: Ranch Photographs\**

September 22 – February 3 (2008)

#### *SPEAK! Children's Book Illustrators Brag About Their Dogs*

November 17 – February 24 (2008)

#### *The Art of Robert Bateman*

November 24 – February 3 (2008)

#### *Karl Bodmer's Animals\**

November 24 – February 3 (2008)

### Exhibitions organized by Joslyn and circulated to other museums:

#### *European Traditions: Nineteenth-Century Paintings from Joslyn Art Museum\**

On view at Pinacoteca Diego Rivera (Xalapa, Mexico); June 21 – August 24



CREDITS ABOVE, CLOCKWISE FROM UPPER LEFT: Élisabeth Louise Vigée Le Brun (French, 1755–1842), Portrait of Marie Antoinette, Queen of France (detail), ca. 1788, oil on canvas, Collection of New Orleans Museum of Art; Robert Bateman (Canadian, born 1930), Sheer Drop (detail), © 1980, oil on masonite, Collection of the National Museum of Wildlife Art; Marcantonio Raimondi (Italian, ca. 1480–ca. 1530), after Raphael (Raffaello Sanzio, 1483–1520), The Massacre of the Innocents (detail) (without the Fir Tree), engraving on paper, ca. 1513–1515, Promised Gift of the Getscher-Wilkinson Collection; Tim Lewis, Buick, Mazza Museum, The University of Findlay (Findlay, OH); Charles W. Guildner (American, born 1932), Self-portrait – Tribute to Wright Morris (detail), 1995, silver gelatin print, Courtesy of the Artist; Stan Strembicki (American, born 1952), Untitled, from the Lost Library Portfolio, 2006, color photograph, Museum Purchase with funds from the James Art Acquisitions Fund; Pierre-Auguste Renoir (French, 1841–1919), Self Portrait (detail), 1875, oil on canvas, Sterling and Francine Clark Art Institute

## COLLECTIONS

### Acquisitions

#### Paintings

##### Gift of

Anonymous in memory of Kendal Kucera, 2007

Timothy App (American, born 1947), *Orbitas*, 1998, acrylic on canvas

Sylvia B. and Jerome I. Cohn

Mogens Balle (Danish, 1921–1988), *Lige-ag -ed*, 1967, oil on board

Gyorgy Kepes (American, born Hungary, 1906–2002), *Twilight*, 1959, oil and sand on canvas

Sam Middleton (American, born 1927), Title unknown (*But not for me*), 1966, watercolor with collage

Sylvia B. and Jerome I. Cohn in memory of Margy Schneider

Gene Davis (American, 1920–1985), *Pink Parachute*, 1980, acrylic on canvas

Richard and Mary Pat McCormick

William Matthews (American, born 1949), *Loose Change*, 2006, watercolor

Thomas K. Seligman and Rita Barela

Sir Thomas Lawrence (and others) (English, 1769–1830), Portrait, possibly of the Countess of Essex, ca. 1820, oil on canvas (pictured above)



*Sir Thomas Lawrence (and others) (English, 1769–1830), Portrait, possibly of the Countess of Essex, ca. 1820, oil on canvas, Gift of Thomas K. Seligman and Rita Barela*

#### Sculpture

##### Gift of

Richard and Frances Juro

Bernard Matemera (Zimbabwe, 1946–2003), *Metamorphosis*, serpentine stone (pictured right)

Josiah Manzi (Zimbabwe, born 1933), *Generations*, serpentine stone

Mr. and Mrs. Joe Ricketts

John Coleman (American, born 1949), *Pitatapui — Bow lance Warrior*, from *Explorer Artists*, "Bodmer-Catlin Series," bronze

**Museum Purchase in honor of Michael B. Yanney's tenure as Chairman of Joslyn Art Museum's Board of Governors, 1997–2006**

Lee O. Lawrie (American, born Germany, 1877–1963), *The Sower*, and Sickle, *Wheat and Thorns*, 1932, 2 copper relief panels

Lee O. Lawrie (American, born Germany, 1877–1963), *The Sower*, 1932, silver medal

### Prints, Drawings, and Photographs

#### Gift of

Sylvia B. and Jerome I. Cohn

Edmondo Bacci (Italian, 1913–1989), Untitled, color lithograph on paper

Albert Besnard (French, 1849–1934), *The Silk Dress (La Robe de soie)*, 1887, etching and drypoint

Massimo Campigli (Italian, 1895–1971), *Women with Frames (Donne ai telai)*, 1952, color lithograph

André Derain (French, 1880–1954), *King, Queen, and Lion*, illustrations for François Rabelais, *Les Horribles et Espouvantables Faictz et Prouessesdu Très Renommé Pantagruel*, 1943, 3 color woodcuts; publisher: Skira, Paris

Paul Jenkins (American, born 1923), *Seeing Voice Welsh Heart*, illustrated poem by Cyril Hodges, 1965, hand-produced book with 6 color lithographs; Editions de la Galerie Karl Flinker, Paris

Sam Middleton (American, born 1927), Title unknown, lithograph

Sir Eduardo Paolozzi (Scottish, 1924–2005), Title unknown, silkscreen on paper; publisher: Cercle Graphique Européen

Marie Hélène Vieira da Silva (French, born Portugal, 1908–1992), Title unknown, color lithograph; publisher: Cercle Graphique Européen

Sylvia B. and Jerome I. Cohn in memory of Frances Batt

Georgi Daskaloff (Bulgarian, born 1923), *Georgi Daskaloff, Court Circle, 12 Original Lithographs*, 1969, color lithographs; publisher: Court Gallery Graphics, Copenhagen

Anton Rooskens (Dutch, 1906–1976), *Anton Rooskens, Cobra Circle, 12 Original Lithographs*, 1967, lithographs; publisher: Court Gallery Graphics, Copenhagen

Mogens Balle (Danish, 1921–1988), *Store Kongensgade Suite for Mogens Balle, Cobra Circle, 12 Original Lithographs*, 1967, lithographs; publisher: Court Gallery Graphics, Copenhagen

Eugène Brands (Dutch, 1913–2002), *Eugène Brands, Cobra Circle, 12 Original Lithographs*, 1968, color lithographs; publisher: Court Gallery Graphics, Copenhagen

Jean-Pierre Vielfaure (French, born 1930), *Jean-Pierre Vielfaure, Court Circle, 12 Original Lithographs*, 1968, color lithographs; publisher: Court Gallery Graphics, Copenhagen

Professor James G. Czarnecki in honor of Professor Andrew Ladis

*The Inferno*, from *The Divine Comedy* by Dante Alighieri, 1868, bound quarto volume, first Italian edition, illustrated by Gustave Doré (French, 1833–1883)



*Bernard Matemera (Zimbabwe, 1946–2003), Metamorphosis, serpentine stone, Gift of Richard and Frances Juro*

Tom French in honor of Robert Getscher

Karl Bodmer (Swiss, 1809–1893), *Hare Pursued by a Goshawk* (*Lièvre poursuivi par un autour*), 1858, lithograph, printer: Bertauts; publisher: Goupil et Cie

Karl Bodmer (Swiss, 1809–1893), *Roe Deer* (*Chevreaux*), ca. 1858, lithograph; printer: Bertauts; publisher: Goupil et Cie

Karl Bodmer (Swiss, 1809–1893), *Fox Lying in Wait* (*Renard à l'affût*), ca. 1858, lithograph; printer: Bertauts; publisher: Goupil et Cie

the Getscher-Wilkinson Collection

William Bailey (American, born 1930), *Untitled* (*Still-Life*), 2001, etching and aquatint

Richard Bosman (American, born India, 1944), *Navigator*, 1993, color woodcut

Elizabeth Catlett (American, born 1915), *Man*, 2003, color woodcut and linocut

Laurence Channing (American, born 1942), *Burning River Intaglio*, 2000, etching and aquatint

April Gornik (American, born 1953), *Cascading Waterfall*, 1998, etching and aquatint

Yvonne Helene Jacquette (American, born 1934), *Bridges Over Cuyahoga River, Cleveland*, 1999, woodcut

Jane Kent (American, born 1952), *The Blue Optimist*, 2006, color aquatint, mezzotint, and roulette

Catherine Kernan (American, born 1948), *Sea Cleft #1*, 1997, color etching and aquatint

Jeanette Pasin Sloan (American, born 1946), *Espresso*, 1995, color lithograph

Steven Sorman (American, born 1948), *For Wont*, 2004, etching and collage

William Wiley (American, born 1937), *Deneb*, 1996, color lithograph

the Getscher-Wilkinson Collection, in Appreciation of the Family of the Joslyn Art Museum, during its seventy-fifth year

Sir Thomas Rowlandson (English, 1756–1827), *Quae Genus Committed with a Riotous Dancing Party, to the Watch-House* [Covent Garden, London, England], from *The History of Johnny Quae Genus: the Little Foundling of the Late Doctor Syntax*, by William Combe, published by R. Ackermann, London, 1822, hand-colored engraving



the Getscher-Wilkinson

Collection in honor of Penelope M. Smith, Registrar/Assistant Curator of Prints and Drawings

Will Barnet (American, born 1911), *The Dream*, 2002, color lithograph

Dr. and Mrs. Daniel Miller

Karel Appel (Dutch, born 1921), *Personage*, 1966, color lithograph

Adolf Dehn (American, 1895–1968), *African Shore*, 1967, color lithograph

Lucio Fontana (Italian, 1899–1968), *Concetto spaziale B*, 1968, aquatint

Kostas Grammatopoulos (Greek, 1916–2003), *Goats on Parnassus*, 1971, color woodcut

Nakao Yoshitaka (Japanese, born 1911), *Woman*, color woodcut

Shigeru Kimura (Japanese, born 1929), *A*, ca. 1969, etching

Walter Williams (American, born 1920), *Girl with Butterflies, #2*, 1964, color woodcut

Walter Williams (American, born 1920), *Marguerita*, 1961, color woodcut

Yoshida Masaji (Japanese, 1917–1971), *Novel Growth No. 2*, 1958, color woodcut

Lenore Polack in honor of Penelope Smith, who widens horizons

Eugène André Champollion (French, 1848–1901), after Jules Bastian-Lepage (French, 1848–1884), *Portrait of Mlle. Sarah Bernhardt*, 1879, etching

**Museum Purchase**

with funds provided by Elvira E. Garcia in memory of her father, Maestro Erwin Ludwig Brynički

Helen Hyde (American, 1868–1919), *Mount Orizaba from Jalapa*, 1912, color woodcut

with funds provided by Carmen and John Gottschalk

Charles W. Guildner (American, born 1932), *Lives of Tradition*, suite of 22 gelatin silver prints

with funds from the James Art Acquisition Fund

Stan Strembecki (American, born 1952), *The Lost Library Portfolio*, 2006–2007, 25 digital inkjet prints

with funds provided by Patricia and Charles Lontor in honor of Penelope Smith, and the Art Purchase Fund

Käthe Kollwitz (German, 1867–1945), *Woman in the Lap of Death* (*Tod mit Frau im Schoß*), winter 1920/21, woodcut (pictured left)



Anton Rooskens (Dutch, 1906–1976), *Anton Rooskens, Cobra Circle, 12* Original Lithographs, 1967, lithograph; publisher: Court Gallery Graphics, Copenhagen, Gift of Sylvia B. and Jerome I. Cohn in memory of Frances Batt

LEFT: Käthe Kollwitz (German, 1867–1945), *Woman in the Lap of Death* (*Tod mit Frau im Schoß*), winter 1920/21, woodcut, Museum purchase with funds provided by Patricia and Charles Lontor in honor of Penelope Smith, and the Art Purchase Fund

with funds provided by Sally Lusk, Lenore Polack, Norma and E. James Fuller, Sara Foxley, Bert W. and Renee Mehrer in honor of Penelope Smith

Fritz Eichenberg (American, born Germany, 1901–1990), *Heathcliff Under the Tree*, from *Wuthering Heights*, 1943, wood engraving

with funds from Suzanne and Walter Scott

Thomas L. McKenney and James Hall, E. C. Biddle, printer, *History of the Indian Tribes of North America*, 1836–1844, text and 121 hand colored lithographs with 120 portraits from the Indian gallery in the Department of War, Washington

### Asian Art

#### Gift of

Anonymous

China, Han Dynasty (206 BC–220 CE), Scabbard with Blade, lacquer and bronze

Dr. Colin Johnstone

China, Tang Dynasty (618–906), Pair of Female Dancers, ceramic with polychrome

### Decorative Arts

#### Gift of

a Former Nebraskan

Gorham Manufacturing Company, Beaux-Arts Punch Bowl, 1893, silver and silver gilt (*pictured below*)

### Commemorative Ephemera

#### Gift of

TUVA Enterprises

*The Story of Columbus and the World Columbian Exposition*, bound book

#### Museum Purchase

Two 1893 Columbian Exposition original VIP passes

Four 1893 Columbian Exposition original US Postal unused commemorative Postcards – four from a set of 12

Two 1893 Columbian Exposition US Mint commemorative silver half dollars

1893 Columbian Exposition original souvenir token of pressed metal

1893 Columbian Exposition original souvenir fold-out book

1893 Columbian Exposition Special US Postal issue commemorative stamps



Gorham Manufacturing Company, Beaux-Arts Punch Bowl (*detail*), 1893, silver and silver gilt, Gift of a former Nebraskan

## Loans

### Loans from Joslyn Art Museum

#### Delaware Art Museum (Wilmington, DE)

exhibition: *Seeing the City: John Sloan's New York*  
(October 20, 2007–January 20, 2008)

work lent: John Sloan (American, 1871–1951), *Sunset, West Twenty-Third Street*, 1905–1906, oil on canvas, 25th Anniversary purchase (1957.15)

#### Denver Art Museum (Denver, CO)

exhibition: *Inspiring Impressionism* (October 16, 2007–September 21, 2008)

venues: High Museum of Art (Atlanta, GA)  
Denver Art Museum  
Seattle Art Museum

work lent: Claude Lorrain (French, 1600–1682), *The Rest on the Flight into Egypt*, c. 1640, oil on canvas, Museum purchase (1957.17)

#### The Museum of Modern Art (New York, NY)

exhibition: *Martin Puryear* (November 4, 2007–January 25, 2009)

venues: The Museum of Modern Art  
Modern Art Museum of Fort Worth  
National Gallery of Art (Washington, DC)  
San Francisco Museum of Modern Art

work lent: Martin Puryear (American, born 1941), *Self*, 1978, polychromed mahogany and red cedar, Museum purchase in memory of Elinor Ashton (1980.53)

#### Naples Museum of Art (Naples, FL)

exhibition: *Impressions: American Painters in France*  
(January 18–May 13, 2007)

works lent: Eanger Irving Couse (American, 1866–1936), *The Cowherd*, 1895, oil on canvas, Gift of the Omaha Public Library (1996.28); Frederick Childe Hassam (American, 1859–1935), *April Showers, Champs Elysées, Paris*, 1888, oil on canvas, Museum purchase (1946.30)

#### Pinacoteca Diego Rivera (Xalapa, Veracruz, Mexico)

exhibition: *European Traditions: Nineteenth-Century Paintings from Joslyn Art Museum* (June 21–August 24, 2007)

works lent: Thirty painting  
by various European and  
American artists

#### Saint Cecilia Cathedral (Omaha, NE)

event: *The Cathedral  
Flower Festival*  
(January 26–28, 2007)

works lent: Twenty-five  
paintings by  
various artists

LEFT: Martin Puryear (American, born 1941), *Self*, 1978, polychromed mahogany and red cedar, Museum purchase in memory of Elinor Ashton, 1980, Loaned to the Museum of Modern Art for the exhibition Martin Puryear



## Loans to Joslyn Art Museum

### Lenders to the permanent collection (originating in 2007)

Anschutz Collection; Ashlie Benton; The Field Museum of Natural History; Olson Family Collection; Private Collection

### Lenders to special exhibitions organized by, or in collaboration with, Joslyn Art Museum

Robert Bateman; Getscher–Wilkinson Collection; David Melby; Lenore Polack; Suzanne and Walter Scott; Gail and Michael B. Yanney

## Conservation

### Objects receiving conservation treatment in 2007:

John Henry (American, born 1943), *Untitled*, 1981, extruded and welded aluminum, paint, Gift of Metropolitan Life Insurance Company (1991.7)

Adolf Schreyer (German, 1828–1899), *The Advance Guard*, oil on canvas, Bequest of Jessie Barton Christancy (1931.23)

George Sugarman (American, born 1912), *Yellow Ascending*, 1977, painted steel, Museum purchase in memory of Leo A. Daly (1983.18)

Titian (Tiziano Vecelli), (Italian, Venetian, 1488/90–1576), *Giorgio Cornaro with a Falcon*, 1537, oil on canvas, Museum purchase (1942.3)



Titian (Tiziano Vecelli), (Italian, Venetian, 1488/90–1576), *Giorgio Cornaro with a Falcon (detail)*, 1537, oil on canvas, Museum purchase, 1942; (LEFT) Detail of face before cleaning; (RIGHT) Detail of face after cleaning at The Getty Conservation Institute (Los Angeles, CA). The conservation will be completed in 2008, and, following display at the J. Paul Getty Museum, the work will return to Joslyn in September 2008.

## MUSIC PROGRAMS

### First Friday JAM

**Ended its 12th season the spring of 2007**

702 in attendance

Chris Saub Trio (January 5)

Oxygen (February 2)

The Turfmen (March 2)

Vlasis (April 6)

### Jazz on the Green

**23rd year**

44,000 in attendance

Matt Wallace Band (July 5)

Big Red & The Zydeco Playmakers (July 12)

Omaha Jazz Orchestra (July 19)

Mezcal Brothers (July 26)

Lao Tizer (August 2)

Susie Thorne & Friends (August 9)

Rob Ryndak (August 16)

Dwayne Dopsie & The Zydeco Hellraisers (August 23)\*

### Holiday Under Glass

**14th year**

1,596 in attendance

University of Nebraska at Omaha Chamber Choir  
(December 4)

Creighton University Chamber Choir (December 5)

Bellevue West Connections (December 6)\*

St. Wenceslaus Catholic Handbell Choirs (December 7)

University of Nebraska at Omaha University Chorus  
(December 11)\*

Omaha Conservatory of Music Piano Students (December 12)

Bryan High School Surround Sound Show Choir  
(December 13)

Papillion/La Vista Vocal Choir (December 14)

Northwest High School Show Choirs (December 18)

Central High School Strings and Jazz Combo (December 19)

Bellevue East High School Chamber Singers (December 20)

Central High School Singers and Bel Canto (December 21)

*\*cancelled due to inclement weather*



TOP TO BOTTOM: Vlasis, First Friday JAM, April 6; Jazz singer Susie Thorne of Omaha, Jazz on the Green, August 9; Jazz keyboardist Lao Tizer (center) of California and his band, Jazz on the Green, August 2

## EDUCATION PROGRAMS

### Tours

715 total tours; 22,818 total participants  
(350 school tours, 16,122 participants; 365 adult tours, 6,696 participants)

### Lectures, Gallery Talks, and Special Programs for Adults

61 programs; 6,324 total participants

#### **Exhibition Events Exclusively for Members:**

*Collecting the Impressionists: Masterpieces from the Sterling and Francine Clark Art Institute* (Members preview; March 23); 1,023 participants  
Michael Cassin, Curator of Education, Sterling and Francine Clark Art Institute



Michael Cassin, Curator of Education, Sterling and Francine Clark Art Institute, shares the story of the Clark and the building of one of America's greatest art collections at the Members preview, March 23

*Spared from the Storm: Masterworks from the New Orleans Museum of Art* (Members event; June 24); 1,072 participants  
Victoria E. Cooke, Curator of European Painting, New Orleans Museum of Art

**75th Anniversary programs**, planned around quarterly themes celebrating Collections, Special Exhibitions, the Building and Campus, and Community Partnerships:

*The Thieves of Baghdad* with Colonel Matthew Bogdanos (public lecture; January 27); 642 participants  
Colonel Matthew Bogdanos, author of the critically acclaimed book *The Thieves of Baghdad: One Marine's Passion to Recover the World's Greatest Stolen Treasures*  
*Exhibition as Inspiration* Panel Discussion (May 3); 13 participants  
Magdalena Garcia, Founder, Executive Director, and Curator, El Museo Latino; John Wilson, Ph.D., Director of Curatorial Affairs/Curator of European Art, Joslyn Art Museum; Neville Murray, Executive Director and Curator, Love's Jazz & Art Center; Dan Siedell, Curator, Sheldon Memorial Art Gallery, University of Nebraska–Lincoln; Jeremy Stern, Assistant Director, Curator, and Director of Bemis UNDERGROUND, Bemis Center for Contemporary Arts

*An Architectural Tour of Joslyn Art Museum* (July 24); 44 participants

J. Brooks Joyner, Director, Joslyn Art Museum  
*State of the Art: Community Forum on Architecture and Design Innovation* (August 26); 82 participants  
Moderator: Steve Jensen, Director of Planning, City of Omaha; Panelists: Gary Bowen, FAIA, Principal, Bahr Vermeer Haecker, Architects LTD; Bruce Carpenter, AIA, Senior Vice President, HDR Architecture, Inc.; Jeffrey L. Day, AIA, Principal, Min | Day; Jeffrey J. Dolezal, AIA, Partner, RDG Planning and Design; Thomas L. Findley, AIA, NCARB, LEED AP, Vice President of Design, Leo A. Daly; David Lempke, AIA, Architect, HDR Architecture, Inc.

**Visualizing Literature: Book Club for Art Lovers**, discussions linking literature and the visual arts, presented in partnership with the Nebraska Medical Center's Health & Wellness Club:

*Strapless* by Deborah Davis (March 13); 32 participants  
*Thieves of Baghdad* by Matthew Bogdanos (May 8); 29 participants  
*The Orchid Thief* by Susan Orlean (September 11); 22 participants  
*My Name is Asher Lev* by Chaim Potok (November 13); 28 participants

**Third Thursday Art Encounters Club**, presented in partnership with The Nebraska Medical Center's Health & Wellness Club, offers docent-guided tours of Joslyn's collections and special exhibitions:

*Legends of the West: The Foxley Collection and Reflections on Literature* (January 18); 13 participants  
*Hundredfold Wishes: An Imperial Chinese Screen and Myth and Mystery* (February 15); 9 participants  
*Hundredfold Wishes: An Imperial Chinese Screen and Escape to Landscape* (March 15); 8 participants  
*Collecting the Impressionists: Masterpieces from the Sterling and Francine Clark Art Institute and Saints and Sinners of the Bible* (April 19); 32 participants  
*Connections: Art, Style & Fashion and The Ins and Outs of Pottery* (May 17); 13 participants  
*Spared from the Storm: Masterworks from the New Orleans Museum of Art* (June 21); 25 participants  
*Spared from the Storm: Masterworks from the New Orleans Museum of Art and Collection Connections* (July 19); 12 participants  
*Spared from the Storm: Masterworks from the New Orleans Museum of Art and Provocative Portraits* (August 16); 26 participants  
*Spared from the Storm: Masterworks from the New Orleans Museum of Art and How Do Museums Do That?* (September 20); 16 participants  
*Taos Society of Artists and If I Were the Curator* (November 15); 13 participants  
*The Art of Robert Bateman and Saints and Sinners of the Bible* (December 20); 18 participants

**Special Exhibition programs:**

**Wide Open West: A Sunday Afternoon Series**, program series presented in conjunction with the special exhibition *Legends of the West: The Foxley Collection*

*Crooked Legs Walk No More: The Impact of Horses Upon Tribal Peoples of the Plains* (February 3); 35 participants  
R. David Edmunds, Ph.D., Watson Professor of American History, University of Texas, Dallas

*Cowgirl Poetry and Western Music* (February 10); 35 participants

Georgeann Wearin, singer/songwriter, author, columnist

*The Myth of "The Gun That Won the West"* (February 17); 27 participants

David Kennedy, Robert W. Woodruff Curator, Cody Firearms Museum, Buffalo Bill Historical Center

*Enduring Images: Remington and Russell's Cowboys and Indians* (February 24); 30 participants

B. Byron Price, Charles Marion Russell Memorial Chair and Director, Charles M. Russell Center for the Study of Art of the American West, University of Oklahoma

**The Impressionists**, poetry and music of the Impressionist period presented in conjunction with the special exhibition *Collecting the Impressionists: Masterpieces from the Sterling and Francine Clark Art Institute*

(April 26); 78 participants

Charlotte Shields, soprano; Michael Cotton, pianist; Shelly Monier, flautist

**Spared from the Storm Lecture Series**, monthly programs presented in conjunction with *Spared from the Storm: Masterworks from the New Orleans Museum of Art*

*What's Cooking in New Orleans* (July 17); 23 participants  
Gerald F. Patout, Jr., Head Librarian, Historic New Orleans Collection

*In the Wake of the Storm: A Photo Chronology of Hurricane Katrina* (August 29); 50 participants

William Montgomery, graduate student of history, UNO; Don Arp, Jr., published author and recipient of the Army commander's Award for Public Service; Staff Sergeant Korey Brunken, US Army Reserve and graduate student of history, UNO; Rick Pitts, retired Chief Petty Officer-Submarines of the US Navy, Defense contractor supporting USSTRATCOM; Alan R. Koening, Ph.D., Adjunct Professor of Military History, UNO, Army Reserve Lieutenant Colonel in charge of First Army's JTF-Katrina History Group

*Élisabeth Louise Vigée le Brun, the Court of Versailles, and the Portrait of Marie Antoinette* (September 11); 46 participants

Joseph Baillio, Ph.D., Senior Vice President, Wildenstein & Company of New York

**Collecting Prints Old and New**, introduction to the art of collecting and connoisseurship presented in conjunction with the exhibitions *The Beautiful Line* and *Paris Revealed: Impressions from the 19th Century*

(April 14); 36 participants

Robert Getscher, Ph.D., distinguished print collector

**Print Workshop**, practical demonstration, discussion, and facilitated examination of authentic prints presented in conjunction with the exhibitions *The Beautiful Line* and *Paris Revealed: Impressions from the 19th Century*

(April 14); 12 participants

Robert Getscher, Ph.D., distinguished art historian and print collector

**AIA Public Lectures**, free talks presented by the Lincoln-Omaha Society of the Archaeological Institute of America (AIA):

*Ancient Landscape: Archaeology and Nation-Building in Greece, 17th–19th Century* (April 1); 42 participants

Effie Athanassopoulos, Associate Professor, Department of Anthropology and Geography and Department of Classics and Religious Studies, University of Nebraska–Lincoln

*A Monumental Cargo: The Roman Column Wreck at Kizilburun, Turkey* (September 30); 51 participants

Deborah Carlson, Classical Archaeologist and Assistant Professor of Anthropology, Institute of Nautical Archaeology, Texas A&M University

**Appetite for Art: Director's Choice**, gallery talks featuring works from Joslyn's permanent collection, presented by Joslyn Director J. Brooks Joyner, followed by lunch:

*In Good Taste: John Singer Sargent's Portrait of Mrs. A.*

*Lawrence Rotch* (January 30); 90 participants

*Well Done!: Frederic Sackrider Remington's Bronco Buster* (February 27); 80 participants

*Peace Meal: Jacques Lipchitz's Hagar* (March 27); 74 participants

*Seasoned to Perfection: John Steuart Curry's Manhunt* (April 24); 86 participants



Joslyn staff hang the 10-foot tall Portrait of Marie Antoinette, Queen of France (1788), one of 89 works in the exhibition *Spared from the Storm* (Photo: Kiley Cruise/Omaha World-Herald. Reprinted with permission from the Omaha World-Herald.)

*A Sentimental Serving*: Alfred Jacob Miller's *The Trapper's Bride* (May 22); 79 participants  
*Sweet n' Spycee*: Massimo Stanzione's *Susannah and the Elders* (September 25); 81 participants  
*Feast Day!*: Bolivian, Unknown Artist, *Virgin of the Rosary* (October 30); 80 participants  
*Earth and Sky . . . and a Piece of Pie*: Gustave Doré's *Mountain Landscape* (November 27); 68 participants

**CU at Joslyn**, public lectures presented in partnership with Creighton's University College:

*Prince Maximilian and Karl Bodmer in German America* (February 17); 71 participants  
 Lorie A. Vanchena, Ph.D., Associate Professor, Modern Languages and Literature, Creighton University  
*La Musique de la Belle France: Vocal Music of Sebastien Le Camus, Michel Pignolet Montclair, Jean-Jacques Rousseau, and Erik Satie* (March 17); 40 participants  
 Charles Jurgensmeier, S.J., Assistant Professor of Fine and Performing Arts, Creighton University  
*Galaxy (1949): Jackson Pollock's Other Wyoming Landscape* (April 21); 44 participants  
 Michael A. Brown, Ph.D., Assistant Professor of Philosophy, Creighton University  
*What's Wrong with this Picture? Missing Patrons in Renaissance Paintings* (September 22); 60 participants  
 Roger Aikin, Associate Professor Emeritus, Fine and Performing Arts, Creighton University  
*Glass Through the Ages: The Nature of Glass and a Short History of Glassmaking Technology* (October 17); 58 participants  
 David Sidebottom, Assistant Professor of Physics, Creighton University  
*Baskin's Bronzes* (November 17); 35 participants  
 Katie Thomas, Associate Professor of Classical and Near Eastern Studies, Creighton University

#### Special programs:

**Massive Change**, public lecture presented in partnership with Design Alliance OMAha (October 4); 680 participants  
 Bruce Mau (pictured right), internationally recognized expert on innovation and creativity, author, architect, and curator



Bruce Mau

#### Gallery Talks for Joslyn Members:

New Members Event: John Wilson, Ph.D., Director of Curatorial Affairs/Curator of European Art, Joslyn Art Museum; collection tour (May 1); 64 participants  
 Members Mingle: Anne El-Omami, Director of Education, Academic Affairs, and Public Programs, and John Wilson, Ph.D., Director of Curatorial Affairs/Curator of European Art, Joslyn Art Museum; collection tours (September 25); 28 participants  
 New Members Event: John Wilson, Ph.D., Director of Curatorial Affairs/Curator of European Art, Joslyn Art Museum; collection tour (November 6); 52 participants



John Wilson, Ph.D., Director of Curatorial Affairs/Curator of European Art, introduces new Museum members to works in the collection, November 6

**New on View**, gallery discussions showcasing new acquisitions, objects on loan to Joslyn, or important reinstallations:

*A Chinese Imperial Screen* (January 21); 9 participants

Dr. John K. Fong, Adjunct Curator of Asian, Joslyn Art Museum

*Western Forest* by Robert S. Duncanson (February 25); 2 participants

John Wilson, Ph.D., Director of Curatorial Affairs/Curator of European Art, Joslyn Art Museum

*Post-Painterly Abstraction* (March 4); 16 participants

Christin J. Mamiya, Ph.D., Hixson-Lied Professor of Art History, University of Nebraska–Lincoln

*Select Prints from The Beautiful Line and Paris Revealed:*

*Impressions from the 19th Century* (April 15);

12 participants

Robert Getscher, Ph.D., Distinguished Art Historian and Print Collector

*Crybaby* by Torben Giehler (May 20); 16 participants

Sara Jacobsen, Curatorial Assistant, Joslyn Art Museum

*Folded Circle, Triangle and Arch* and Other Maquettes by

Fletcher Benton (September 16); 7 participants

John Wilson, Ph.D., Director of Curatorial Affairs/Curator of European Art, Joslyn Art Museum

*Fantasia* by Odilon Redon (October 7); 7 participants

John Wilson, Ph.D., Director of Curatorial Affairs, Joslyn Art Museum

*The Bartered Bride* by Xenia Hausner (November 18);

9 participants

John Wilson, Ph.D., Director of Curatorial Affairs/Curator of European Art, Joslyn Art Museum

#### Art Classes

9,632 total participants

*Art Classes and Camps*

521 sessions

5,915 participants

*Art-Making with School Tour*

112 sessions

2,661 participants

*Girl Scout and*

*Boy Scout Programs*

14 sessions

195 participants



Art-making fun

*Kiewit Summer Fun*

30 sessions

636 participants

*Riley Gallery Receptions*

3 events

225 participants

## Outreach Programs

68,041 total participants

### Outreach Trunks

176 requests  
61,728 participants

### Resource Packets and Videos

291 requests  
4,011 participants

### Discovering Art

34 sessions  
1,102 participants

### Outreach Talks

13 talks  
832 participants

### Latino Fest at El Museo Latino

September 9  
200 participants

### Passport Partners Drawing Classes

(a partnership with UNMC, UMA, and The Nebraska Medical Center)  
12 sessions  
168 participants

## Community Events

12,843 total participants

*Family Fun Day – Chinese Imperial Screen* (February 11);  
1,093 participants

*Scout Family Day* (March 17);  
447 participants

*75th Anniversary Family Festival – Celebrate Collecting*  
(March 31); 803 participants

*Family Fun Day – Collecting the Impressionists: Masterpieces from the Sterling and Francine Clark Art Institute* (April 22);  
1,383 participants

*75th Anniversary Family Festival – Celebrate Exhibitions*  
(May 12); 968 participants

*Family Fun Day – Spared from the Storm: Masterworks from the New Orleans Museum of Art* (September 9); 932 participants

*75th Anniversary Omaha Public Schools Open House*  
(September 27); 44 participants

*Jazz on the Green Sponsor Family Day* (September 23);  
113 participants

*Passport Partners Family Day* (a partnership with UNMC, UNMC Physicians, and The Nebraska Medical Center)  
(October 13); 129 participants

*Holiday Lights Family Festival* (December 17); 1,005 participants



*Scout Family Day, March 17*



*Art After Dark, September 20*

*Art After Dark*, 75th anniversary outdoor cinema program in collaboration with the Library of Congress American Memory project; 4 evenings; 5,650 total participants  
*Jammin' the Blues and Jazz on a Summer's Day* (September 6); 150 participants  
*The Rocky Horror Picture Show* (September 13); 2,000 participants

*The Sound of Music* (September 20); 2,500 participants  
*The Treasure of the Sierra Madre* (September 27); 1,000 participants

*Story Adventures*  
(a partnership with Omaha Public Library); 4 programs; 114 total participants

*Family* (September 19); 35 participants  
*Home* (October 17); 28 participants

*Sharing* (November 21); 32 participants  
*Celebrations* (December 19); 29 participants

*Picture This!*; 4 programs; 162 total participants  
*Stone City, Iowa* by Grant Wood (September 29); 25 participants  
*The Grief of the Pasha* by Jean-Léon Gérôme (October 20); 20 participants  
*Mató-Tópe (Four Bears)*, *Mandan Chief* by Karl Bodmer (November 24); 90 participants  
*Young Girls at the Piano (La Leçon de piano)* by Pierre Auguste Renoir (December 29); 27 participants



*Story Adventures, September 19*



ALL AT RIGHT: *Spared from the Storm Family Fun Day*, September 9

## Hands-On Resources

27,149 total participants

*Scott EdTech Gallery*  
19,200 participants  
(estimated)

*Art Packs*  
515 requests  
1,781 participants

*Audio Guide*  
168 participants

*Kids Can Do Art*  
6,000 participants  
(estimated)

## Programs for Teachers and Students

7,233 total participants

*Creighton Faculty and Alumni Reception*  
(January 23)  
75 participants

*College Night*  
(February 16 & September 14)  
844 participants

*University of Nebraska at Omaha Art Educators Inservice* (February 21)  
30 participants

*Nebraska Art Teachers Association Session*  
(March 10)  
85 participants

*National Art Education Association Sessions*  
(March 14)  
200 participants

*Student Art Exhibition*  
(March 17–25)  
65 student artists;  
367 participants  
(awards ceremony)

*Prairie Visions Leadership Academy* (June 12–15)  
95 participants

*University of Nebraska at Omaha Survey of Western Art History Course*  
(Tuesday and Thursday evenings, August 28–December 20)  
34 participants

*Celebrate Creativity*  
(a partnership with the Omaha Symphony)  
4 events  
(October 16, 17, 18, 19)  
1,478 participants

*Third Thursdays for Teachers*  
(inaugural program)  
4 sessions  
217 participants

*Especially Artful Saturdays*  
(inaugural program for special needs audiences)  
6 sessions  
300 participants

*Teacher Web Resource Use*  
3,443 successful requests  
for pages

## Kid Connection & Theo's Roost Club

54,244 successful requests for Kid Connection  
(children's website) pages

Theo's Roost Club; 93 members



*Kids Can Do Art, the oversized "tin can" that opens to reveal self-guided hands-on activities related to artworks on view in the galleries*



*ABOVE: College Night, February 16*



*LEFT, TOP: Student Art Exhibition co-chairman Cathy Born (right) and a volunteer install works for the event in the fountain court; LEFT, BOTTOM: Especially Artful Saturday, April 28*



## JOSLYN ART MUSEUM ASSOCIATION

*The Joslyn Art Museum Association (JAMA) of the metropolitan area serves as a support group for the Museum, volunteering time, enthusiasm, and fundraising abilities in a variety of capacities including planning annual fundraisers for the Museum and sponsoring a wide range of education programs and special events.*

### 2007 JAMA Board of Directors

President Karen Sundell	Recording Secretary Joani Mullin
President-Elect Melissa Marvin	Corresponding Secretary Phyllis Choat
Vice President of Education Shannon Slowiaczek	Treasurer Ann Blunk
Vice President of Fundraising Cathy Perry	Southwest Iowa Advisor Leslie Southard
Vice President of Social Anne Baxter	Advisor Lori Williams



ABOVE, TOP: Michael B. Yanney, Joslyn Board of Governors Executive Committee member and wife Gail Yanney (left), Gala honorary chairs, with Gala chairman Denise Bartels and husband Kevin;  
ABOVE, BOTTOM: Special guest E. John Bullard, Director of the New Orleans Museum of Art, Festivities Fit for the French Quarter Gala Preview, June 15

### JAMA Special Projects, Fundraisers, & Art Trips

#### Special Projects

Family Fun Days (February 11, April 22, September 9)  
College Nights (February 16, September 14)  
Annual Billboard Contest for Southwest Iowa Elementary School Students (in celebration of Youth Art Month) (March)  
Student Art Exhibition (March 17–25)  
Museum to the Classroom's Third Thursdays for Teachers Preview and Kickoff (Preview, March 15; Kickoff October 18)  
Director's Preview, *Collecting the Impressionists: Masterpieces from the Sterling and Francine Clark Art Institute* (March 22)  
Docent Symposium (April 22–25)  
Holiday Staff Reception (December 5)  
JAMBassadors  
Art Classes Scholarships  
Sign Language Interpreters



Michael Conforti (left), Director of the Clark Art Institute in Williamstown, Massachusetts, and Joslyn Director J. Brooks Joyner with Renoir's *Girl Crocheting at the Collecting the Impressionists Director's Preview*, March 22

#### Fundraisers

*Festivities Fit for the French Quarter*  
Gala Preview for *Spared from the Storm: Masterworks from the New Orleans Museum of Art* (June 15)

*Madame X Speaks*  
Lecture and Luncheon featuring Deborah Davis, writer, veteran film executive, and author of the acclaimed, *New York Times* bestseller *Strapless: John Singer Sargent and the Fall of Madame X* (October 29)



Guest speaker Deborah Davis (center), author of *Strapless*, with Joslyn Art Museum Association Lecture Luncheon chairmen Kathy Wilson (left) and Anne Baxter (right), October 29

#### Art Trips

Art Trip to Atlanta, GA, featuring the special exhibitions *Louvre Atlanta (Kings as Collectors and The Decorative Art of the Kings)*; *The Gates of Paradise: Lorenzo Ghiberti's Renaissance Masterpiece*; and *Annie Leibovitz: A Photographer's Life, 1990-2005* at the High Museum of Art (May 15–16)  
Art Trip to Washington, DC, featuring the special exhibitions *J.M.W. Turner* and *Edward Hopper* at the National Gallery of Art (November 14)

## GIVING SOCIETY EVENTS

### Bodmer Society

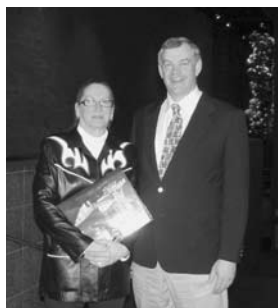
The Bodmer Society, named after Karl Bodmer, the remarkable artist who accompanied Prince Maximilian's 1832-34 expedition to North America, was created to foster interest in Western and American Indian art and culture. Membership dues support the exhibitions, programs, and publications of the Margre H. Durham Center for Western Studies at Joslyn Art Museum.

January 17

The Bodmer Society, in collaboration with Opera Omaha's Opera Council, hosted a special presentation, "The Smithsonian at Joslyn," which was a prelude to the opera *Wakonda's Dream*. W. Richard West, Jr., Founding Director of the Smithsonian Institution's National Museum of the American Indian, provided a slide lecture on American Indian art and John Wilson, Joslyn's Director of Curatorial Affairs/Curator of European Art, provided insight into Joslyn's permanent collection of American Indian art.

February 23

Members enjoyed a private reception and gallery talk for the exhibition *Legends of the West: The Foxley Collection* with Byron Price, Director of the Charles M. Russell Center for the Study of Art of the American West at the University of Oklahoma. Price's talk explored the mythic and romantic incarnations of cowboys and Indians as developed in the art of Frederic Remington and Charles M. Russell.



Bodmer Society chairman Mary Daugherty and special guest B. Byron Price, February 23

March 14

Members enjoyed a private reception and gallery talk with Seattle-based artist Ben Marra whose photographs were featured in the exhibition *Faces from the Land: A Photographic Journey through Native America*. Marra discussed how he and his wife, Linda, documented powwows and the shared cultural qualities that bind together the communities of Native America.

October 10

Members enjoyed a private reception and special presentation with David C. Hunt, retired director of the Stark Museum of Art (Orange, TX) and former curator of Western American Art at Joslyn. Hunt gave a lecture on a group of Taos Society paintings on loan to the Museum from the private Olson Family Collection.

November 8

Sculptor and member of the Cowboy Artists of America, John Coleman, was the keynote speaker at the Bodmer Society's annual *Rendezvous* dinner. Coleman's works include subjects ranging from Native American and western to figurative and wildlife. One of his most ambitious projects is his 10-piece series of bronze sculptures inspired by explorer artists Bodmer and Catlin, a gift to the Museum from Mr. and Mrs. Joe Ricketts. *Rendezvous* hosts were Lynne and John Boyer, Rhonda and Howard Hawks, Dick Holland, and Legacy Galleries.

### Contemporary Art Society

The Contemporary Art Society is a dynamic group whose mission is to encourage, support, and stimulate the collection and study of contemporary art at Joslyn. Members share a passion for the exciting art of our time with others who share a similar interest and help foster a new audience among those who are becoming acquainted with these important works.

May 23

Members enjoyed a private tour of the Phillip Schrager Collection of Contemporary Art in Omaha with former Joslyn curator and current Director of the Schrager Collection, Janet L. Farber. Schrager's collection, recognized as one of the region's finest, includes paintings works by international artists and is distinguished for its depth and exceptional quality, as well as for the monumental scale of many of its artworks.

June 7

Internationally recognized architect and CAS member Randy Brown hosted a private reception and "Art in Architecture" tour of his new home. Brown founded Randy Brown Architects with the mission to bring innovative and artistic architectural designs to his home state of Nebraska. Inspired by the rural landscapes and communities of Nebraska, Brown and his team have developed a unique approach to architecture that couples the best of modern design with an appreciation of the natural landscapes and honest lifestyles of the Heartland.

August 28

Members enjoyed a private reception and gallery talk with sculptor Fletcher Benton. Guests had the opportunity to view ten of Benton's maquettes on loan to Joslyn. Benton, who will receive a lifetime achievement award from the International Sculpture Center in 2008, is one of a generation of postwar American Constructivists, artists who attempted to create a visual vocabulary based on science, mathematics, and geometry.

October 5

Holliday T. Day, former curator of contemporary art at Joslyn and later at the Indianapolis Museum of Art, was the guest speaker at CAS's Annual Dinner. Among her achievements at Joslyn was the 1981 retrospective *Shape of Space: The Sculpture of George Sugarman*. On the occasion of Joslyn's conservation and reinstallation of Sugarman's *Yellow Ascending*, Day discussed Sugarman's career in general and *Yellow Ascending* in particular.

November 9-11

A group of CAS members traveled to Kansas City to see some of the country's most important new works of architecture as well as two private collections of contemporary art. The group visited the Nelson-Atkins Museum of Art's new Bloch Building, designed by Steven Holl, and the Nerman Museum of Contemporary Art, designed by Korean-born architect Kyu Sung Woo, on the Johnson County Community College campus.



CAS members tour a private collection during an art trip to Kansas City, November 9-11

## PATRON EVENTS

### Patron Members

*Patron members are a vital link in the long tradition of philanthropy and personal involvement that has been at the heart of Joslyn.*

April 15

Patron members-only brunch with art collector Robert Getscher. Following the brunch, Patrons enjoyed a viewing of the exhibition *The Beautiful Line*.



*Patron and Contributor Night, Jazz on the Green, August 23*

August 23  
Patron and Contributor members' night at *Jazz on the Green*. Following a private reception, members enjoyed reserved seating at the concert which featured Dwayne Dopsie & the Zydeco Hellraisers from New Orleans.

### Young Art Patrons

*The Young Art Patrons offers exciting social and educational events for a rising generation of arts admirers between the ages of 25 and 40. These events emphasize the richness of the Museum's collections and exhibitions, provide exposure to a variety of music programs, and feature access to the Museum's staff and board.*

January 26

*Breakfast with a Board Member*

YAP Members were treated to donuts and coffee before Michael Yanney, former Chairman of Joslyn Art Museum's Board of Governors, discussed how he has achieved success in his career and the importance of supporting the arts in the community.

February 22

*Conversation with a Curator*

YAP members talked with Anne El-Omami, Joslyn's Director of Education, Academic Affairs, and Public Programs. Following a wine and cheese reception, El-Omami presented a unique lecture on covers from *The New Yorker*.

April 12

*Art of Collecting*

YAP members learned about collecting prints from private collector Robert Getscher. Following his presentation, YAP members viewed select works from his collection featured in Joslyn's exhibition *The Beautiful Line*.

May 10

*3rd Annual Art on Tap*

YAP members and other young professionals had the opportunity to visit the Museum free of charge and meet others who share a similar interest in the arts. Following a beer sampling, guests viewed the exhibition *Collecting the Impressionists: Masterpieces from the Sterling and Francine Clark Art Institute*.



*Art on Tap, May 10*

June 14

*Art in Architecture*

This tour began at Joslyn Art Museum where Director J. Brooks Joyner discussed the 1931 Memorial Building, which is considered one of the finest examples of Art Deco architecture in the nation. From there, the tour moved outside to the Joslyn grounds where Bruce Carpenter of HDR shared the plans for the development of Joslyn's sculpture garden. Finally, YAP members traveled to Joslyn Castle and learned more about the architectural significance of this historical building, former home of George and Sarah Joslyn.

July 12

*YAP Night at Jazz on the Green*

YAP members were treated to a beer sampling and a viewing of the exhibition *Stan Strembicki: The Lost Library*. Then, YAP members gathered in a reserved area on the south side of the grand staircase to enjoy a concert by Big Red & The Zydeco Playmakers of Hillster, Texas.

August 10

*3rd Annual Art Crawl*

This event provided an opportunity to tour three of Omaha's cultural arts facilities: El Museo Latino, Love's Jazz & Arts Center, and Joslyn Art Museum. YAP members and other young professionals viewed the work of artists from diverse cultures.

September 13

*YAP Night at Art After Dark*

YAP members enjoyed reserved seating for this first-time event. Members gathered together to view *The Rocky Horror Picture Show*, complete with a bag of props provided by the Museum. There was a costume contest and free soda and popcorn for all to enjoy.

October 18

*Dundee Gallery Tour*

YAP members and other young professionals enjoyed a visit to the new Dundee Gallery. Everyone enjoyed complimentary wine while talking to owner Jean Imray and artist Wanda Ewing about the gallery and the works on display.

December 16

*YAP Hot Chocolate Reception*

In conjunction with the *Holiday Lights Festival*, YAP members had a reserved room where they and their friends and families could enjoy complimentary hot chocolate before participating in the events of the day.

## DONORS

Donor gifts are to Joslyn Art Museum and its associated foundation.

### Endowment

#### Visio: A Clear Vision for the Future

*Visio: A Clear Vision for the Future* encompasses endowment and similar funds for operations, exhibitions, and acquisitions. The following are named funds that provide support for acquisitions, programs, and projects.

Ethel S. Abbott Art Endowment Fund  
Milton R. and Pauline S. Abrahams  
Library Endowment Fund  
Bella and David S. Block  
Scholarship Fund  
Center for Education Endowment Fund  
Center for Western Studies Art  
Endowment Fund  
Center for Western Studies  
Endowment Fund  
The Conboy Fund  
The Jack Drew Endowment for 18th-  
and 19th-Century Art  
Gilbert M. and Martha H. Hitchcock  
Endowment Fund  
Lawrence R. and Jeannette James Art  
Acquisition Fund  
Sarah H. Joslyn Endowment Fund  
Peter Kiewit Endowment Fund  
Rismiller Endowment Art Purchase Fund  
Rismiller Endowment Fund  
Carolyn J. Scott Exhibition Fund  
Robert H. and Mildred T. Storz  
Endowment Fund  
Gretchen Swanson Velde Joslyn  
Endowment Fund

In addition to the named funds, the donors listed below have made outright gifts, estate gifts, or irrevocable planned gifts to ensure that Joslyn Art Museum's tradition of excellence continues for years to come. The gifts also represent a shared faith in the future of Joslyn as the region's major resource for the collection, preservation, and interpretation of the visual arts.

Anonymous (15)  
Pauline B. Allen  
Marian and Harold Andersen  
Jo Anderson  
Joan Angotti  
The Anschutz Foundation  
Nancy Askew  
Jack Barnhart

Margaret and Hubert Bath  
Thelma Beckler  
Janet Bellinger  
Dorothy and Lyman Bennett  
Robert Benzel  
James Bergquist  
Barbara Birmingham  
Margaret Block  
Gertrude E. and Herman Brinkman  
Nancy and Dan Brune  
Barbara and James Call  
Eric Carlson  
Betty and Sydney Cate  
Rosemary Christopherson  
Joseph and Robert Cornell Memorial  
Foundation  
James Czarnecki  
Shirley Daley  
Jack Drew  
Margre and Charles Durham  
Del J. Ellis  
Jane and John Ellsworth  
Evaline A. Fisher  
Mary E. Flannigan  
John K. Fong  
Sara M. Foxley  
Norma and E. James Fuller  
June and Ed Gauhari  
Dodie and Elmer Gerfen  
Carmen and John Gottschalk  
Elinor Greenfield  
Sharon Marvin Griffin  
Agnes Hamilton  
Alice W. and Berchel H. Harper  
Mary Jo Havlicek  
Marianne and Fred Hawkins, Jr.  
Mary and Charles F. Heider  
Anunt Hengtrakul  
Cecil Hicks  
Ursula and Henry Hoffman  
Mary and Richard Holland  
Ila Dean Horn  
Roger Hughes  
Gilbert Johnson  
Richard Jourdan  
Frances and Richard Juro  
Mary and Nathan Kaiman  
Leona and William Kernen  
Helen Kistle  
Helen and Ted Kolderie  
Jack Kostich  
Susie and Steve Kupka  
Marian Leary  
Ida and Walter Lenz  
Howard Lewis

Patricia and Charles Lontor  
L. Zenaide Luhr  
Sally and Graham Lusk  
Irene and Joseph Malek  
Francis T. B. Martin  
Joan and Robert Masterson  
Helen and Frank Matthews  
Janet and James McClymond  
Cynthia and Thomas F. McGowan  
Lyra Ann and Charles Monasee  
Joel Faires and Dean Naegele  
Barbara and Michel Nelson  
Judy and Ron Parks  
Patty Patrick  
Beverly and Gerald Pearson  
Thomas Huerter and Chris Pilcher  
Lenore and Joseph Polack  
Rita M. Price  
Marjorie Quinlan  
Alice Naomi Reineke  
Ephraim L. Marks and David M. Rice  
Marlene and Joe Ricketts  
Anne and David A. Rismiller  
Polly and Jack Savage  
Joan and Michael Schneeweiss  
Terri and Phil Schrager  
Rose Schupak  
Suzanne and Walter Scott  
Anne M. Shaughnessy  
Margaret Shearer  
Eve and Frederick J. Simon  
Jeanette E. Smith  
Nancy and Larry Smith  
Shirley and Michael Sorrell  
Edward F. Stapowich  
Morton A. Stelling  
Janice D. and Larry D. Stoney  
Janet S. and Willis A. Strauss  
John Thomas  
Isabella B. Threlkeld  
Dorothy and Stanley Truhlsen  
Dorothy and Allan Tubach  
Alice Ungar  
Ernest and Jacqueline Vrana  
Family Foundation  
Vaclav Vytracil  
Patricia A. and Judd F. Wagner  
Webster Family Foundation  
Louise Wickstrum  
Wiesman Family  
Robert Getscher and Harry Wilkinson  
Louis Williams  
Philip J. Willson  
Gail W. and Michael B. Yanney  
Barbara P. and Robert P. Youngman

## Gifts for Operations, Exhibitions, Programs, and Music Series

### \$100,000 and above

City of Omaha  
Douglas County  
First National Bank  
Aubrey Kerr McClendon  
Peter Kiewit Foundation  
Suzanne and Walter Scott  
Union Pacific Foundation

### \$50,000-\$99,999

Durham Foundation  
Carmen and John Gottschalk  
Foundation  
Richard D. Holland  
Mutual of Omaha  
Omaha Steaks  
The William Randolph Hearst  
Foundation  
Gail W. and Michael B. Yanney

### \$25,000-\$49,999

Energy Systems Company  
MidAmerican Energy Foundation  
Nebraska Arts Council  
Peter Kiewit Sons', Inc.  
Robert H. Storz Foundation  
Eve and Fred Simon  
Ann and Kenneth E. Stinson  
Valmont Industries, Inc.

### \$10,000-\$24,999

Anonymous  
Alan and Marcia Baer Foundation  
Blue Cross and Blue Shield of Nebraska

Cynthia and Mogens Bay  
Frank Benevento  
ConAgra Foods Company  
Barbara and James Call  
Deloitte & Touche  
Mary and F. Joseph Daugherty  
Dixon Family Foundation  
Katherine and William Foxley  
Gilbert C. Swanson Foundation  
Carol Gendler  
HDR, Inc.  
Leona and Bill Kernen  
Lincoln Financial Group  
Mammel Family Foundation  
Owen Family Foundation  
Lenore Polack  
Ivel and John Reed  
Jane and Thompson H. Rogers  
SilverStone Group  
Jeannette Smith  
The Scoular Foundation  
U.S. Cellular  
Webster Family Foundation  
Wells Fargo  
Philip J. Willson  
Shirley and Jim Young

### \$5,000-\$9,999

Adah & Leon Millard Foundation  
Pamela and James Q. Crowe  
Ray and Helen DuBois  
William Esping  
Evaline Fisher  
Norma and James Fuller  
KPMG, LLP  
Kutak Rock, LLP

Nancy and Michael McCarthy  
Dian J. Moore  
Qwest Foundation  
State of Nebraska  
Whitmore Charitable Trust  
Wiesman Development

### \$1,000-\$4,999

Aaron Ferer and Sons Company  
AG Processing Inc.  
Carrie and Leigh Abramson  
Blue Stem Prairie Foundation  
Lisbeth R. Barron  
Jeanne and Tom Cunningham  
Beverly and William L. Donaldson  
Sally DeVinney Jensen  
Rae and Thomas Keogh  
Lamson, Dugan and Murray, LLP  
Lincoln Financial Group  
Mary and John Mitchell  
Moglia Family Foundation  
NP Dodge Company  
Schering-Plough  
Robert Soener  
Marie Stitt  
Whole Foods Market

### \$500-\$999

Carol and Brad Chapman  
Nancy L. King  
Harrington Mason  
Anne and David A. Rismiller  
Fran and J. Emmet Root  
M. Elizabeth and Stanley Scott

### \$100-\$499

Central States Health & Life  
Berchel (Alice Dale) Harper  
Joyce G. Higgins  
Mary and Thomas C. Jetton  
Sally Kjelson  
William Legrand  
Ardyth Low  
Susan and Stephen McWilliams  
Anne Shaughnessy

## Gifts to the Art Reference Library

### Gifts of art-related books with a total value of \$100 or more

Judy Meek  
Robert Getscher and Harry Wilkinson



Robert Bateman (left) and his wife, Birgit Freybe Bateman, with Mary and Joseph Daugherty (right), sponsors of *An Evening with Robert Bateman*, November 30

**Honorary and Memorial Gifts**  
(Donors who made annual memorial/  
honorary gifts to Joslyn of \$100  
or more)

Anonymous

In memory of Linda Weinert  
Isabella Artman  
In memory of D and Emma Jane  
Chesbro Wort, April Craig  
Hartman, and Matthew  
Leigh Clausen

Marcia Baer

In honor of Michael B. Yanney  
Mark R. Bernard

In memory of Fae Bernard  
Margaret Block

In honor of Uma and  
Laxmi Buddharaju  
In honor of Linda and  
Steve Hamilton  
In honor of David Hsu  
In honor of Mary Jo and  
Robert Langdon  
In honor of Kirsten and  
Patrick Leu  
In honor of Rachel and  
Luke Nordquist  
In honor of Jan and  
David Silverberg  
In honor of Chandrika and  
Gamini Soori  
In honor of Lydia and  
Bernie Su  
In honor of Dorothea and  
Stefano Tavantolo  
In honor of Lisa and  
Stephan Thome  
In honor of Annette and  
Peter Townley

Sylvia (Babe) Cohn

In memory of Robert Ahmanson  
Debbie Klein

In memory of Linda Weinert  
Wende and John F. Kotouc

In memory of Roy Tranel  
Kathy P. and Don F. Larimer

In memory of Linda Weinert  
Barbara and Kirk C. Lewis  
In memory of Richard Sullivan

Joyce and Carl G. Mammel  
In memory of Richard Sullivan

Linda and Richard Moody

In memory of Fae Bernard  
Susan and David A. Morris

In memory of Margot Ann Scott  
McClary Chaffin

*The new and expanded  
Hitchcock Museum Shop is  
made possible through the  
generosity of Suzanne and  
Walter Scott, pictured with  
Joslyn Director J. Brooks  
Joyner (right) at its  
grand re-opening,  
November 15*



Nina Patton

In memory of Fae Bernard  
Janet and Bill Read

In memory of Fae Bernard  
Ivel J. and John T. Reed

In honor of Walter Scott  
Anne Shaughnessy

In memory of Linda Weinert  
Jane and Randel Smith

In memory of Fae Bernard  
Nancy C. and John Webster

In memory of Howard Nelson  
Nancy and William Woodhams

In memory of Fae Bernard  
Gail W. and Michael B. Yanney

In memory of Jean G. Day  
In memory of Tyler B. Gaines

In memory of Margot Ann Scott  
McClary Chaffin

**Gifts In-Kind**

(Gifts valued at \$100 or more)

AAA Rents  
Boulevard Brewing Company  
Coca-Cola  
Drickey Studios, Inc.  
Elman & Co.  
Emspace Group  
FIREBIRDS  
Fr. Daniel Lenz  
Hap Abraham Catering  
Jazz, A Louisiana Kitchen  
K.T. Restaurants, LLC  
KETV Channel 7  
Midwest Airlines  
Omaha World-Herald  
Oriental Trading Company  
Lenore Polack

Quality Brands of Omaha and  
Corona Light

Terry K. Watanabe Charitable Trust  
Whole Foods Market  
Gail W. and Michael B. Yanney

**Passport Partners**  
**(\$100,000)**

*Passport Partners is a cultural partnership  
between The Nebraska Medical Center,  
the University of Nebraska Medical  
Center, UNMC Physicians, and Joslyn  
Art Museum with the mission to offer  
a variety of art-focused opportunities,  
both at Joslyn and at the medical center  
campus, to over 10,000 employees and  
students.*

The Nebraska Medical Center  
University of Nebraska Medical Center  
UNMC Physicians

**Businesses and Institutions  
Participating in  
and/or Donating to  
Membership Drives**

**Spring Drive**

PayPal  
Omaha Steaks  
Mutual of Omaha  
Blue Cross and Blue Shield of Nebraska  
Booz Allen  
Hamilton, Inc.  
NP Dodge Company

**Fall Drive**

ACI Worldwide  
Alegent Health Mercy Hospital  
AON Risk Services  
Baird, Holm, McEachen, Pedersen,  
Hamaan & Strasheim, LLP  
Barnhart Press  
Bellevue University  
Borhseim's Fine Jewelry and Gifts  
Bridges Investment Counsel, Inc.  
The Burlington Capital Group, LLC  
City of Omaha  
Creighton University  
CSG Systems, Inc.  
Deloitte & Touche  
DLR Group, Inc.  
Energy Systems Company  
First Data Resources  
First National Bank  
First Westroads Bank  
HDR, Inc.  
John Day Co.  
Kiewit Corporation  
Kutak Rock, LLP  
Leo A. Daly  
Lincoln Financial Group  
Metropolitan Utilities District

MidAmerican Energy Holdings Company  
Northern Natural Gas Company  
Northern Border Pipeline Company  
NP Dodge Company  
Omaha Public Power District  
Omaha World-Herald  
Redstone Communications  
The Scoular Company  
SilverStone Group  
Union Pacific  
US Bank of Nebraska  
Valmont Industries, Inc.  
West Corporation  
Woodman of the World Life Insurance



*James R. Young, Chairman of  
Joslyn's Board of Governors,  
greets guests at the Corporate  
Business Membership Drive Kick-  
Off Luncheon, August 23*



## GIVING SOCIETY MEMBERS

### **Bodmer Society**

**(Support group for Joslyn's Margre H. Durham Center for Western Studies)**

*Founding Members of the Bodmer Society are denoted with an asterisk (\*).*

Marian and Harold Andersen\*

Jo Anderson

Judy and Robert Bates\*

Cynthia and Mogens Bay\*

Patricia and Richard Bell

Robert Billingsley

Ann and James Bonham

Lynne and John Boyer\*

Susan A. Buffett

Barbara and James Call\*

Syd L. Cate\*

Carol and Brad Chapman

Jane and LeRoy Crosby

Pamela and James Q. Crowe

Mary and F. Joseph Daugherty\*

Robert B. Daugherty\*

Dawn and Sid Dinsdale

Beverly and William L. Donaldson

Charles Durham\*

Sue Fletcher

Katherine and William Foxley\*

Kathy and Wayne Gary Gates

Marcy and John Golden

Carmen and John Gottschalk\*

Judy and Terry Haney

Marianne and Fred Hawkins, Jr.

Rhonda and Howard Hawks\*

Mary and Charles Heider

Richard D. Holland\*

Anda Howe

Carole and Robert Julian\*

Hani and John Kenefick\*

Leona and Bill Kernen\*

Linda L. Klaasmeyer

Mary and Clarence L. Landen, Jr.

Bruce Lauritzen

Susan and Michael Lebens

Anna and George Little

Mary and Dennis Lundgren\*

Sally and Graham Lusk

Joyce and Carl Mammel\*

Helen and Frank Matthews\*

Beverly and Harold Maurer

Nancy and Michael McCarthy

Cindy and Thomas F. McGowan\*

Carolyn Meissner

Dian J. Moore\*

Roger F. Morrison

Ann and A. Ralph Navaro

Shirley and Daniel Neary

Anne and John Nelson

Lenore Polack

Marlene and John Joe Ricketts

Karen and Doug Riley

Anne and David A. Rismiller\*

Jane and Thompson H. Rogers

John P. Schlegel, S. J.

Lori and W. David Scott

Suzanne and Walter Scott, Jr.\*

Eve and Fred Simon\*

Peggy and David Sokol\*

Ann and Kenneth E. Stinson\*

Janet S. Strauss\*

Phyllis and Del Toeppen

Dorothy and Stanley Truhlsen\*

Tricia and Mark Weber

Nancy and John Webster\*

Gail and Michael Yanney\*

Shirley and Jim Young



Guest speaker artist John Coleman, and his wife, Sue, at Rendezvous, November 8

**Contemporary Art Society**  
**(Special interest group directly**  
**engaged with contemporary art)**

Kathy and Ross Bellinghiere  
Frances and Louis Blumkin  
Myriel Boes  
Djel Ann and Paul Brown  
Kim and Randy Brown  
Anne and Stephen Bruckner  
Sandi L. and William Bruns  
Eddith Buis  
Rkachea and Bruce Carpenter  
Carol and Brad Chapman  
Sylvia B. Cohn  
Rex Daugherty  
Karen and Robert Duncan  
Ruth and Joe A. Erman  
Jill and Mike Erman  
Estelle Faier  
Larry Ferguson  
Catherine and Terrence Ferguson  
Sara Foxley  
Norma and E. James Fuller  
Carol Gendler  
Carmen and John Gottschalk  
Carol and Howard Hahn  
Marianne and Fred Hawkins, Jr.  
Mary and Charles Heider  
Shari Hofschire  
Lawrence R. James, II  
Frances and Richard Juro  
Joanie and Martin J. Lehr  
Dianne and Allan Lozier  
Mary and John Mitchell  
Donna Menolascino and Karl Momsen  
Maggie and Robert Mundy  
Shirley and Daniel Neary  
Sharee and Murray Newman  
Marilyn Offutt-Sullivan  
Ronald J. Palagi  
Lenore Polack  
Polina Poluektova  
Karen and Doug Riley  
Kenny Rocker  
Robert D. Rogers  
Jane and Thompson H. Rogers  
Jan Buckingham and  
Lauren M. Ronald  
Stacy and Bruce A. Simon  
Eve and Fred Simon

Betiana and Todd Simon  
Heidi and Mark Singer  
Annette and Paul Smith  
Ann and Kenneth E. Stinson  
Marika and Peter Stone  
Monte and Duane Thompson  
Patrick H. Tyrance, Jr.  
Gail and Irving Veitzer  
Joodi and Norman Veitzer  
Patricia and Judd Wagner  
Donna and Perry T. Williams  
Philip J. Willson  
Joan Gibson and Donald Wurster  
Shirley and Jim Young



*Phillip Schrager speaks about his collection to CAS members at his gallery,  
May 23*

## PATRON MEMBERS

### Patron Benefactor

#### (\$10,000 and above)

Marian and Harold W. Andersen  
Energy Systems Company  
Marianne and Fred Hawkins, Jr.  
Jane and Thompson H. Rogers

### Patron Governor

#### (\$5,000 to \$9,999)

Judy and Jack W. Baker  
Judy and Robert Bates  
Cynthia and Mogens Bay  
Carol and Brad Chapman  
Sylvia B. Cohn  
Charles W. Durham  
Kathy and Wayne Gary Gates  
Carmen and John Gottschalk  
Rhonda and Howard Hawks  
Marilyn and G. Woodson Howe  
Wende and John Kotouc  
Bruce Lauritzen  
Helen and Frank Matthews  
Shirley and Daniel Neary  
Karen and Doug Riley  
Lori and W. David Scott  
Suzanne and Walter Scott  
Lin and Michael Simmonds  
Eve and Fred Simon  
Peggy and David Sokol  
Ann and Kenneth E. Stinson  
Valmont Industries, Inc.  
Nancy and John Webster  
Barbara and Wallace R. Weitz  
Mary and John K. Wilson  
Shirley and Jim Young

### Patron Director

#### (\$2,500 to \$4,999)

Mona and Marshall E. Faith  
Catherine and Terrence Ferguson  
Richard D. Holland  
Louise and J. Brooks Joyner  
Mary and Clarence L. Landen  
Dianne and Allan Lozier  
Joyce and Carl Mammel  
Lenore Polack  
Julie and John Schroeder  
Janet S. Strauss

### Patron Curator

#### (\$1,000 to \$2,499)

Marcia and Frederick Backer  
Anne Stuart Batchelder  
Dorothy M. Bennett  
Frances and Louis Blumkin  
Barbara and James Call  
Suzanne and Ward A. Chambers  
Mary and F. Joseph Daugherty  
Robert B. Daugherty

Ruth and Joe A. Erman  
Janice and Steve Erwin  
Evaline Fisher  
Barbara and William Fitzgerald  
Roz Friedman  
Norma and James Fuller  
Michele Van Deventer and  
Charles Gifford  
Elinor N. Greenfield  
Debra and Bruce Grewcock  
Janis and John Haggstrom  
Melissa Marvin and Geoffrey Hartig  
Cynthia and Herbert Hartman, Jr.  
Teresa and Fred Hunzeker  
Donna and Matthew Johnson  
Esther and Carter Jones  
Frances and Richard Juro  
Myrna and Robert Krohn  
Eleanor Malot  
Beverly and Harold Maurer  
Suzanne and Joseph McNamara  
Sharon and Richard Miles  
Roberta and Norman Miller  
The Miller Foundation, Inc.  
Lyra Ann Monasee  
Diane and Ben Nelson  
Janis R. Nelson  
Anne and John Nelson  
Sharee and Murray Newman  
Nancy F. Noddle  
Marilyn Offutt-Sullivan  
Kay and Robert Owen  
Pearson Art Foundation  
Sandra and James J. Reding  
Carol and W. Lee Rowe  
Cynthia and Charles Schneider  
Ruth Lind and J. William Scott  
Mary and Anthony Seina  
Margaret Shearer  
Phyllis A. Sherman  
Carol and Drexel Sibbernson, Jr.  
Betiana and Todd Simon  
Lynette and William Singer  
Phyllis and Del Toebben  
Dorothy and Stanley Truhlsen  
Judith Vann

Diana and Dennis P. Walker  
Pam and Michael C. Weekly  
Philip J. Willson

### Patron Collector

#### (\$500 to \$999)

Nancy and David Abboud  
Jane O'Keefe Addy  
Diane and Robert M. Ames  
Robyn and L. Fred Amis  
Nancy Askew  
Jamie and Tom Barker  
Nancy N. and George J. Behringer  
Sally G. and Frederick M. Bekins  
Mary Ann Belford  
C. R. (Bob) Bell  
Joanne and Robert Berkshire  
Barbara Bock-Mavis  
Sylvia and Gary Bohn  
Sally and Edson L. Bridges  
Mark J. Brodkey  
Mary Clarkson and Robert Broom  
Eileen and Henry G. Brown  
Susan J. Boust and George K. Burcum  
Susan Butler  
Elizabeth and John Carroll  
Jan and Richard Caulk  
Phyllis and James Chapin  
Joan and Donald Cimpl  
Mary Jo and Richard M. Coffey  
Laura and James Commers  
Kathy and Larry Courtnage  
Charlotte Conner and William Dana  
Mary and Hal Daub  
Colleen and Roger Dilley  
Anne and James Dolan  
Cindy F. Cutshall and  
David S. Downing  
Rosemary and Bernard Duhaime  
Debby Durham  
Lynette and Marvin Dvorak  
Bobbi and John Dyer  
Paula and James Ellis  
Jane and John Ellsworth  
Anne and Salem El-Omami  
Terry and Randolph Ferlic



*Joslyn patron members listen to a guide at the ancient agora, or market and assembly place, on the island of Delos, the legendary birthplace of the god Apollo and one of the most important archaeological sites in Greece. This was one stop on a two-week-long study tour of classical antiquities in Rome, the Greek Islands, Athens, and Istanbul, the inaugural trip in Joslyn's Grand Tour program, September 16-30*



*Collecting the  
Impressionists  
Members  
Preview,  
March 23*

Pam and William Fleming  
Cindy and Albert Frank  
Elizabeth Davidson and Clark Hodder  
Carole L. Christ and Darwin Jespersen  
Nancy and David Friedland  
Marlen Frost  
Frances H. and Ray D. Gaines  
Edith A. Gallagher  
Nancy and Thomas Gallagher  
Nancy S. and George F. Gilmore  
Kay Lynn and John C. Goldner  
Shirley and Leonard Goldstein  
Walter B. Graham  
Beverly and Randall Greer  
Belinda B. and Carl B. Greiner  
Patricia and Jerry Gress  
Sharon Marvin Griffin and  
William Griffin  
Judith and John Griffiths  
Barbara and David Haggart  
Ramona and Deryl F. Hamann  
Ibby B. and John W. Hancock  
Judy and Terry Haney  
Elinor and Robert Hansen  
Karen and Kim Hawkins  
Julie and David Hefflinger  
Marilynn and William Hetzler  
Bruce Heyne  
Bonnie Hickey  
Anne Hubbard  
Maureen and Richard Hunt  
Jeannette and Lawrence R. James  
Jean and David Jaskierny  
John J. Jelinek  
Phyllis and John Jeter  
Mary Jetton  
Noreen and William Johnson  
Richard A. Jourdan  
Elizabeth Scott Karpf  
Ruth and James H. Keene  
Helen and Richard Kelley  
Teresa and Kirk Kellner  
Shari and Bill A. Kellstrom  
Karen and Howard Kennedy

Rae and Thomas Keogh  
Maxine and Joe Kirshenbaum  
Kathleen and William Kizer  
Steph and Jack Koraleski  
Earl R. Kreins  
Diane and James Landen  
Deb and Al Larsen  
Marian H. Leary  
Grace and Earl Leinart  
Bobette and Jay Lerner  
Deana and Michael Liddy  
Katie and James Linder  
Susan J. Lozier and Ian Macleod  
Ann Mactier  
Mia Nagy McGinn and Tom McGinn  
Dorothy and Daniel McKinney  
Susan and Steven McWhorter  
Renee and Bert Mehrer  
Dian J. Moore  
Tania and Terry Moore  
Michelle and Mario Mota  
Jan Nurnberger  
Harriet and William L. Otis  
Dolores Owen  
Leslie and William Palmer  
Janet and Stephen Papenfuss  
Mary and Richard J. Parrish  
Barbara and Donald Pavelka  
Cathy and Troy Perry  
Patricia J. and Gerald Pfeffer  
Patricia J. and James Phalen  
Cassandra J. and Gary A. Pietrok  
Liza and Jerry Porter  
Betty Foster and Chuck Powell  
Rita Price  
Jo and Rick A. Prusha  
Kathleen and John Ransom  
Virginia and Martin Reagan  
Ivel and John Reed  
Betsy J. and Robert A. Reed  
Susanne Shore and Pete Ricketts  
Jan Buckingham and  
Lauren M. Ronald

Rebecca and Kirk Samuelson  
Molly and Tobin Schropp  
Elizebeth Murphy and  
Ray Schueneman  
Amy Scott  
Anne and Alan Simon  
Klayton Killion and Robert Siniard  
L. Harriet Singer  
Teddi and Timothy L. Slattery  
Martha and D. David Slosburg  
Ellen and Richard Slosburg  
Stanley J. Slosburg  
Smith Bourne & Associates, Inc.  
Dara J. Spivack  
Peg and Dennis Stessman  
Thomas D. Thalken  
Leslie and Daniel Thiele  
Jann and Lawrence B. Thomas  
Lynda and M. Ross Thomas  
Jane and Thomas Tonniges  
Margo Tucker and E. J. Tucker  
Jan and Charles Vrana  
Duane Warden  
Anne Thorne Weaver  
Patti Jo and Dennis Weiss  
Diane and Richard Westin  
J. Todd White  
Judy and Gale Wickersham  
Cynthia and David Wiesman  
Mary and John Wilson, II  
Joan Gibson and Donald Wurster

**Young Art Patrons  
(\$150 Supporting Members)**  
Mimi and Todd Boswell  
Jamey and Christopher Carlson  
Amy and Stuart Chittenden  
Arnel B. Citurs  
Carisa and Matthew Dillon  
Lori Reese and Frank Forlini  
Julie and James Gernetzke  
Mark Guillatt  
Jennifer Magilton Hinrichs and  
Mark Hinrichs  
Emily and Michael Jung  
Jake D. Slosburg  
Candace J. Tielebein  
Amy and Thomas Trenolone  
Bill Wardell  
Sabrina and Zachary Weiss  
Thomas Worthington  
Ryan Zabrowski

## CONTRIBUTOR MEMBERS

### **Sustaining (\$250 to \$499)**

Mary P. and John C. Barnhart  
Jo Bass  
Marilyn Beig  
Lisa A. Bladt  
Judy and Frank Blazek  
Chris L. and Ronald Blumkin  
Karen and Doug Brouillette  
Scot Caldwell  
Evelyn and Carol Comte  
Susan E. Conine  
Aurel Couch  
Mary (Peg) E. and Gary L. Crouch  
Robert H. Culver, Jr.  
Carolyn and Robert Daisley  
Janet and Fred Davis  
Janelle F. and Leon F. Davis  
Gloria and Roy Dinsdale  
Claudia and Walter Douglas  
Gayle and Sarge Dubinsky  
Lou and Scott Dye  
Mary J. and William S. Ellis  
Deborah and Kenneth Elson, Jr.  
Joan Squires and Thomas Fay  
Yoshiko and Edward J. Fitzpatrick  
Kim Folta  
Diane and Jere Fonda  
Sandra and Howard Friedman  
Carol and Michael Geary  
Paula and Gary Glissman  
Linda and Jerry Gordman  
Wanda and J. Michael Gottschalk  
Alice and Jerry D. Hanson  
Carr E. Heaney, Jr.  
Barbara and Paul E. Hodgson  
Mary L. and Thomas H. Holley  
Kay and Jim Horwath  
Nadine Hunter  
Sheri and Steve Idelman  
Carolyn and George M. Ireland  
Jayne L. Timmerman and  
Daniel L. Jaksich  
Christi and Thomas Janssen  
Mary R. and Paul C. Jessen  
Cheri Jones  
Fanny S. Jones  
Elizabeth and Jerry Jones  
Ellen C. and Bruce C. Karsk  
Jan and Victor Kensler  
Margaret A. Kirkeby  
Renee and John E. Kizer  
Richard F. Klaas  
Amy and Brad Knuth  
Victoria and David A. Krecek  
Janet A. and H. Frederick Kuehl  
Shirley Kulakofsky  
Janet and C. Rex Latta  
Clark Lauritzen  
Barbara and Kirk C. Lewis

Sina J. Linman  
Joan V. and John J. Matoole  
Ann and James E. McGill  
Lindsey Miller-Lerman  
Mary and John W. Monson  
Cynthia A. Zurmuhlen and  
Garet J. Moravec  
Dorothy and William E. Morrow, Jr.  
Rozanne and Duncan Murphy  
Lynette S. and Matt R. Olsen  
Mary E. Helms and Kenneth R. Olson  
Catherine and Richard Pedersen  
Bradley and Lynn Perry  
Allison and Gary Petersen  
Joy A. Pillard  
Winifred and Lewis Pinch  
Linda and Bill Pratt  
Marjorie A. Quinlan  
Erica Roethemeyer  
Ruth and John C. Sage  
Shelly and Stanley H. Schack  
Joanne and James R. Scott-Miller  
Diane and Lawrence F. Shackman  
Ann and Frank C. Sidles  
Jeannette A. and H. Wayne Smith  
Pamela and Jim Specht  
Ann L. and Gene Spence  
Pam and Ed Stanek  
Betsy J. and Lynn A. Stephenson  
Ingrid and Del Stites  
Nancy H. Sunderland  
Nicole B. Theophilus  
Nancy and Alan Thorson  
Jean O. and Millard R. Thurmond  
Jean M. and Richard B. Tobin  
June Edwards and Robert Tucker, Jr.  
Dorothy and Dean J. Tuma  
Carol B. and David U. Van Metre  
Linda and Robert S. Walker, Jr.  
Linda R. and Ronald L. Wax  
Sue L. and Tom Weidner  
Katie and Watie White  
Shari Woodward  
Judy Zweiback

### **Associate (\$100 to \$249)**

Frances and Charles Addy  
Margaret and John Allington  
Jane Alseth  
Beth and Jeff Andersen  
Anne and Lou Andersen  
Martha M. Andersen  
Carol A. Anderson  
Carolyn Owen Anderson  
Nancy and David Anderson  
Ann and Richard Anderson  
Vickey Anderson  
Theresa and Charles E. Andrews  
Judith and John Atkins

Karen and Jerry Authier  
Toni and James Bac  
Peter L. Bachenberg  
Emily R. Baker  
Christine A. Webster and James Balters  
Rose Marie and George J. Basque  
Weenonah L. and Curtis K. Bayer  
Clare and Duane Baylor  
Jean and Steven Beck  
Nancy and Steven Beckwith  
Linda Bedwell  
Anne Begley  
Thomas M. Belford  
Gerry Sullivan and Robert Benzel  
Karen Bermel  
Mary and Tom Bernstein  
Anne D. and Robert T. Binhammer  
Pam and Dennis Bintner  
Gary Birge  
Barbara Ann and Frank M. Blank  
Sharon L. and Robert Bloechle  
Judith Boelts  
Kathleen and Joseph R. Bohacek  
Bonnie and Allan Boone  
David Borlaug  
Dorothy and David H. Bowman, Jr.  
Meroe Brady  
Rose Mary and Richard Braun  
Diane and Jeffrey Briggs  
Elizabeth Owens and William Brock  
Tina and Dale A. Broekemeier  
Nancy and Dave E. Brown  
Kim-Lien Dinh and James D. Browning  
Barbara and Gerald Brundo  
Jean and Bruce Buehler  
Margaret A. Burns  
Mary K. and James R. Campbell  
Bonnie and Robert Campbell  
Leslie Berry and Larry Carlson  
James C. Carnicom  
Anne D. and James A. Carroll  
Marilyn and H. Robert Cassling  
David Catalan  
John F. Cazahous, Jr.  
Susan C. and Bob Chenoweth  
Martha Cheyney  
Val and Mary Chickinelli  
Gretchen and Fred Christensen  
Joyce E. Christensen  
Annette and Travis Clark  
Amy Coacher  
Vita and J. Michael Coffey  
Terrence Connelly  
Cora and Maurice Conner  
March and Ira Cotton  
Penny and Michael Cox  
Jackie and Steve Cramer  
Jacquelyn and Herbert Crowley  
Most Reverend E. F. Curtiss, Archbishop

Teri S. and Mark L. D'Agostino  
 Rosemary G. Daly  
 Kathleen Dankert  
 Mary S. and Kurt A. Davey  
 Rose Marie and Bill E. Davis  
 Cornelia and John B. Davis  
 Jean G. Day  
 Debi and Jerry Deines  
 Geraldine C. and Harold T. Dibelka  
 Terri and John Diesing  
 Kim W. and Tom Dinsdale  
 Linda A. Dobry  
 Grace-Ann and E. David Dolak  
 Carol and David Domina  
 Barbara J. Donovan  
 Jackie and Bill Doyle  
 Betty Sample Drake  
 Karen and Patrick Drickey  
 Valerie and Kim Duncan  
 Catherine and C. D. Duran  
 Karen and Larry Dwyer  
 Michelle and Gregory Eakins  
 Claire W. Eason  
 Catherine Eberle  
 Irene and Gary G. Ecklund  
 Barbara J. and Herbert Egerer  
 Mary Kaye Eggers  
 Beth and Raymond (Chuck) Eliason  
 Marnie and R. J. Ellingson  
 Mary and Herbert Engdahl  
 Cathy and Todd Engle  
 Bernadette and Paul Esposito  
 Karen and Richard Everett  
 Ellen and Leonard L. Finnegan, Jr.  
 Rosemary and John Fitzgibbons  
 Therese and Tim Fitzgibbons  
 Rev. David P. Fleming  
 Lynn and Ed Fleming  
 Barbara J. Ford  
 Penny and David Forner  
 Sandra and Drew Fossum  
 Robert M. Foster  
 Muriel Frank  
 Gail and Bruce Frasier  
 Nev and Gordon E. Fredrickson  
 Marcia Gallner  
 Karen and Bruce Garver  
 Dana and Steve Gehring  
 Karen and Thomas D. Gensler  
 Sharon and Frank A. Giitter  
 Marcia Gilmore  
 Sarah F. and William F. Ginn  
 Polly and Joe Goecke  
 Barbara and Gary Goldstein  
 Barbara Goodrich  
 Margaret J. and John L. Gordon  
 Rosalie P. and Charles M. Graz  
 Nina and John J. Griffin  
 Virginia and Robert L. Grissom

Katie and Joel Guenther  
 Joan and Charles Hackett  
 Patricia Hageman  
 Jo Ann Hajek  
 Jennifer and Daniel Hamann  
 Marie Larchick and Arthur Haney  
 Grace E. Hansen  
 Mildred E. and Malvin L. Hansen  
 Jacquelyn and Roger K. Harned  
 Carolyn and Jeff Harrington  
 Janice and Sheldon Harris  
 Darrauld B. Harsh  
 Gregory A. Havelka  
 Mary Jo Havliceck  
 Cindy and Scott Heider  
 Barbara J. and Douglas S. Heikel  
 Ursula and John Hill  
 Joan C. and Peter W. Hill  
 Rose M. Hill  
 Pat Collins Hill and William C. Hill  
 Norma J. Hilt  
 Kristen and Gary Hoffman  
 Catherine and M. S. Hohman  
 Mary Anne and David E. Hoover  
 Clara and Harold Hoover  
 Maxine Horning  
 Elizabeth and Donald Hosford, Jr.  
 Anne Houlihan  
 Teresa Houser  
 Barb and Robert Huettner  
 Annette and Steven Huff  
 Ann B. and Gerald L. Hug  
 Mary Beth and Daniel Hunt  
 Caroline Hunting  
 Carla and Thomas J. Imray  
 Ginny and Dale Inglis  
 Linda Ingram-Jasa  
 Marian Iversen  
 Maria C. and Dean G. Jacobsen  
 Melissa Jarecke  
 Teresa Meyer and Jim Jarzabek  
 Eva M. and Burton D. Jay  
 Gilbert D. Johnson  
 Patricia and Gordon F. Johnson  
 Mary K. and Robert D. Johnson  
 Patricia and Robert Johnstone  
 Keith and Judy Josephson  
 Elizabeth J. and Kevin M. Joyce  
 Jan and Bill Kabourek  
 Renee and Sanford Kasner  
 Patricia D. and Gene F. Kathol  
 Audrey and Richard F. Kauders  
 Kurt A. Keeler  
 Katie Kelly  
 Dale Kent  
 Patrick R. Kielion  
 Lydia J. Caldeira and Stephen E. Kight  
 Ann Kineen  
 Geraldine B. and Jack B. King

James Kleffman  
 Susan and Robert Knapp, Jr.  
 Glenda K. Knowles  
 Jean and Donald H. Korff  
 Joan W. Kriegler  
 Mary Ellen and Charles Krobot  
 Victoria and Kenneth Kroeker  
 Susan and Gary Kuck  
 Barbara Kuhn  
 Carol A. and Michael J. LaCroix  
 Carole and K. Wayne Lainof  
 Mary Jo and Robert Langdon, Jr.  
 Colleen and Michael Langenfeld  
 Lois J. Inskeep and Lorinda Langner  
 Anna Liza and Pierre J. Lavedan  
 Phyllis and Leslie Lawless  
 Cynthia and Philip Lee  
 Chery Griffin and Chuck Lenosky  
 Barbara and Albert Leung  
 M. Patricia Leuschen  
 Kathryn and Jack Lewis  
 Sandra Neely and Patrick Lhermitte  
 Anne C. and T. Geoffrey Lieben  
 Tom D. Liefer  
 Jennifer Toebben and Chris Link  
 Cindy and Mike Littrell  
 Lora Damme and Jay Longinaker  
 Patricia and Charles Lontor  
 Marjorie Benson Loring  
 Faith L. Louis  
 Trudy and Larry Lundquist  
 Gail and Khaled Mabrouk  
 Maxine and Armel MacDonald  
 Ruth and J. Terry MacNamara  
 Sally G. and Edward M. Malashock  
 Virginia H. Malone  
 Marilyn and Justin Manvitz  
 Caroline and Michael Mapes  
 William March  
 Sally S. and Richard P. Marshall  
 Elaine Martin  
 Robert J. Martin  
 Caryl and Jose Martinez  
 Tricia and Jack Martis  
 Susan Martz  
 Barbara L. Maus  
 Mary M. and Charles F. Maxwell, Jr.  
 Catherine and Marcus Maydew  
 Ethlyn and Earl McCleave  
 Lisa Crockett and Allan McCutcheon  
 Beatrice R. McLaughlin  
 Joan and Earl J. McLean  
 Robin Behlers and Paul Mileris  
 Michael Vincent Miller  
 Patricia A. and Peter W. Miller  
 Daisy and J. Gates Minnick  
 Regina and John Minton  
 Katherine and Tom S. Miya  
 Mary R. and James J. Montequin

Marilyn and David Moore  
 Juanita Moore  
 Nancy and Michael Moran  
 Rachael and Kenneth Moreano  
 Arlis and Philip E. Morrison  
 Jolene M. and Bruce A. Moseman  
 Nancy Morris and Joseph Muller  
 Elvira Garcia and Gordon Mundell  
 Kay and Doug Munter  
 Beverly and Robert J. Murray  
 Gayle and Timothy Nance  
 Loy and Vernon Nebergall  
 Laura-Lee and Howard W. Needelman  
 Lori and David Nelson  
 Diane Nelson-Berman  
 George A. Nelson  
 Kathy W. and George E. Nelson  
 Barbara and Michel Nelson  
 John Newton  
 Christine and David Nikunen  
 Mary and Kevin D. Nohner  
 Sandra L. Nolle  
 Tom Norris  
 Victoria L. and Robert B. Northrup  
 Carol and Charles Novich  
 Renee and Richard O'Brien  
 Frederic P. Ogren  
 Sybil Thailing-Olson and Evan Olson  
 Barbara and Michael O'Malley  
 Connie and H. Don Osborne  
 Dorothy Otis  
 Kim Kalkowski and Robert Ottemann  
 Therese Paladino  
 Russell W. Palmer  
 Michelle and Rubens Pamies  
 Jennifer and Thomas Pansing, Jr.  
 Ann and Raymond Pape  
 Susan Seaton and John G. Papproth  
 Jane and Rick Parod  
 Marie and Joseph Payer  
 Elna W. and Robert E. Peirce  
 Letitia and John W. Pemberton  
 Carolyn Kay Peters  
 Jean Ann Ballinger and Ward D. Peters  
 Michelle Petersen  
 L. Victoria Peterson  
 Karyn Pfeffer  
 Marjorie and Warren Phillips  
 Bev and Kennard Pohlman  
 Karen F. and Oliver B. Pollak  
 Jane and Ken Power  
 Vicki Pratt  
 Sandra Price  
 Teri and Ronald Quinn  
 Laura A. Rachwalik  
 Sara and Gary W. Radil  
 Andrew Rasmussen  
 Nanette Rasmussen  
 Betty C. and Hans Rath

Izen I. and Neal S. Ratzlaff  
 Helen C. and Barney B. Rees  
 Steven K. Reida  
 Katherine Rhea  
 James Rich  
 Ann Robey  
 Jane and William Roccaforte  
 Silvia and Larry E. Roffman  
 Robert D. Rogers  
 Jane and Carl H. Rohman  
 Lorna M. Rollag  
 Debra J. Romberger  
 Fran and J. Emmet Root  
 Linda and David Rosenberg  
 Nancy A. and Jim E. Rosenthal  
 Lois and Ronald W. Roskens  
 Richard E. Rossi  
 Kathi and Louis J. Rotella, Jr.  
 Karen and Max Rudolph  
 Patricia and Joe Samson  
 Helen and Stephen Sawtell  
 J. G. Schaaf  
 Anne E. Scheerer  
 Nola and David Schettler  
 Nancy and John Schiaparelli  
 Jeri and William Schlueter  
 Rick W. Schreiber  
 Hayes and Gilbert Schreiner  
 Nancy and Phillip Schroeder  
 Mark Howard Schulze  
 Alcyone M. Scott  
 Dianne M. and John A. Scott  
 Willa and Lee D. Seemann  
 Kathleen Tighe-Seidel and  
 Thomas W. Seidel  
 Greg Severson  
 Anne and Bruce Shackman  
 Anne Shaughnessy  
 Fran and Neil Shaver  
 James T. Shaw  
 John Sheehan  
 Usha and Dan Sherman  
 Laura and William Shiffermiller  
 Kay Shilling  
 Lonnie E. Shumate, Jr.  
 Linda C. and Robert R. Siffring  
 Deborah Simkin  
 F. Miles Skultety  
 Patty Skwarek  
 Patricia and Sanford Smith  
 Pam J. and Jim F. Sorrell  
 Leslie and John Southard  
 Connie and Richard H. Spellman  
 Sandra Squires  
 Denese H. and Thomas D. Stalnaker  
 Arlene and David Steier  
 Dorothy I. and David Stern  
 Jean and Bill Stillmock  
 Paul Stoupa

Jane Carnazzo and Robert Stutzman  
 Donna D. Sulskis  
 Robert and Karen Sundell  
 Charles D. Szmrecsanyi  
 Kristeen Tadich  
 Jane and Michael Tan Creti  
 Elizabeth and Thomas Tape  
 Ann M. and Jon G. Taylor  
 Vance F. Taylor  
 Patricia and Dale TeKolste  
 Jan and Steve Thelen  
 Phil Thielen  
 Kelly and Steve Thole  
 Carol and Gary Thompson  
 Karen and Gary N. Thompson  
 Linda and Ronald Thompson  
 Ann E. and Andy Titus  
 Kathy L. and Robert C. Townsend  
 Irene and Donald Treaster  
 Suz and Steve Trusty  
 Nancy J. and Kevin D. Vaughan  
 Harriot and Richard Veach  
 Barbara J. Velinsky  
 Betty J. and John A. Vifquain  
 Suzanne and Blair Vogel  
 Susan and Bruce Vosburg  
 Suzann and Erik Wagner  
 Barbara Waldie  
 Edward J. Walsh  
 Virginia and Thomas Walsh  
 Donna Walter  
 Eugene Waltke  
 Colleen and Edward Warin  
 Jo Marie and James Warren  
 Bridgette Wasinger  
 Ed Weber  
 Heather and Alan Weed  
 Bette L. Weekly  
 Lyn and Robert Weick  
 Verne Welch  
 Sharon Welna  
 Madeline and Art West  
 Margaret and Larry West  
 Susy and Tom Westlund  
 Mary Hamilton and Irvin White  
 Maru Whitmore  
 Lori L. and Stephen H. Williams  
 Sandra and Daniel R. Wilson  
 Julie and Mark Wilson  
 Mary Beth and James P. Winner  
 Barbara and Gary D. Woods  
 Connie and H. Randal Woodward  
 Marek A. Wozniak  
 Ellen and Stavely Wright  
 Gloria J. Zakaras  
 Robert Zimmerman  
 Charlotte and Morley Zipursky  
 Dolores and Richard Zolnosky  
 Evelyn Zysman

# VOLUNTEERS

## Education

### JAMBassadors

Kelsey Anderson  
Samantha Ashcraft  
Alma Bercerril  
Sarah Bergeron  
Chelle Boomgaarden  
Michaela Bradley  
Mary Beth Broshihan  
Kristin Carosella  
Drew Carryer  
Abby Chambers  
Liatte Dotan  
Samantha Evans  
Laura Ferris  
Ben Fisher  
Caitlin Harding  
Hannah Harlow  
Rebecca Harrison  
Chris Haug  
Drew Heckman  
Jose Hernandez  
Mandy Homan  
Taylor Jahn  
Elizabeth Kinzer  
Chelsea Lopez  
Shelly MacLaughlin  
Samantha Mancuso  
Brianna Marth  
Alyssa Martinez  
Sarah McKee  
Rachel Meredith  
Emily Mitchell  
Kenzie Mohlman  
Michelle Morrissey  
Megan Mullin  
Brookelynn Musil  
Anne Newman  
Brittany Romaine  
Taylor Saalfeld  
Brooke Schluchter  
Lindsay Schulz  
Damir Selimovic  
Irsa Shoiab  
Keelan Stewart  
Anne Sundell  
Samira Tella  
Hayley Verboon  
Toan Vueong  
Corrine Waddell  
Elizabeth Wallace  
Kim Weeks  
Morgan Wolff  
Ben Wu  
Katherine Zhu

### Docents

*Emeritus Docents are denoted with an asterisk (\*).*

Pamela Acuff  
Suzanne Arney  
Judith Boelts  
Joanne Bonifant  
Cathy Born

Nancy Brune  
Laura Burroughs  
Marita Camp  
Laura Chambers  
Jean Circo  
Barbara Donovan  
Estelle Faier  
Ethel Flannigan\*  
Elise Fowler\*  
Sara Foxley  
Norma Fuller  
Barbara Garinger  
Edith Godfrey  
Alice Gooder  
Linda Gordman  
Patricia Hagaman  
Juliana Hahn  
Milt Hanson  
Jody Harvey\*  
Bob Hefflinger\*  
Veronica Hefflinger\*  
Jeanne Henry  
Joyce Higgins  
Pegge Hlavacek  
Kate Holstein  
Beth Ione Howard  
Ila Dean Horn  
Mary (Moran) Irving  
Karen Dix Johnson  
Jean Johnson  
Noreen Johnson  
Esther (Vernie) Jones  
Barbara Lambries  
Mary Lu Larson  
Robert Lewis  
Patricia Lontor  
Sally Lusk  
Maxine MacDonald  
Marilyn Mangan  
Linda Mathew  
Ruth McKee\*  
Renee Mehrer  
Teresa Meyer  
Dorothy Morrow  
Jean Munhall-Sitzman  
Loy Nebergall\*  
Rose Nelson  
Linda O'Hare  
Dick O'Toole\*  
Mary Petty  
William Pierson\*  
Lenore Polack  
Rita Price  
Joan Quelette  
Pat Ranney  
Kathi Rotella  
Jan Sanderson  
Judy Schafer  
Judy Schram  
Mary Jo Schulte  
Joan Scott  
Margaret Shearer  
Frances Sherrard  
Toni Shreve  
Nan Sibbersen

Jan Sinram  
Arlene Smith  
Kathleen Smith  
Sandra Squires  
Jean Stillmock  
Pat Strecker  
Ellen Stoll  
Mary Jo Stoll\*  
Doris Taulborg  
Jenni Toeppen

### Scott EdTech Gallery

Brooke Bergantzel  
Jack Waldron

### Joslyn Information

#### Assistants

Marcia Anzalone  
Mary Ann Chaney  
Peggy Dahulick  
Elaine Dutton  
Susan Henshaw  
Barbara Maus  
Mary Ellen McMahon  
Lynda Mirvish  
Alice Pauley  
Frank Schepers  
Anne Shaughnessy

#### Library

Catherine Almeda  
Grace Carey  
Chris Corbit  
Jeanne Dalton  
Kari Fossum  
Linda Hickman  
Rose Hill  
Stacie Knight  
Josephine Kocol  
Dorothy Moore  
Mary Marchio  
Brooke Masek  
Mike Miller  
Courtney Pentland  
Colin Quinn  
Megan Rush  
Lisa Stokes  
Cynthia Vana  
Barbara Wehrmacher-Swick

#### Membership

Marian Andersen  
Cindy Bay  
Barb Bergantzel  
Todd Boswell  
Elaine Buescher  
Stuart Chittenden  
Kent Cisar  
Sylvia (Babe) Cohn  
Austin Fearnow  
Ellen Fitzsimmons  
Elinor Greenfield  
Sharon Marvin Griffin  
Jane Hagebush  
Christa Hamilton

Mary Jo Havlicek  
Marianne Hawkins  
Michelle Haynes  
Mary Hills  
Teresa Hunzeker  
Glen Johnson  
Heidi Jones  
Michael Jung  
Angela Klug  
Wendy Koontz  
Carmel Krone  
Howard Lewis  
Vera Lewis  
Kathryn Magli  
Brooke Masek  
Beverly Maurer  
Jeff Scott McCarthy  
Sarah McCarthy  
Erin McKillip  
Diane Nelson  
Pegg Noyes  
Jan Osten  
Cathy Perry  
Lenore Polack  
Margaret Quinn  
Karen Riley  
Carol Russell  
Frank Schepers  
Audrey Sherrod  
Kim Singletary  
Mary Kay Smid  
Jessica Wyrill

### Museum Shop

Kay Armstrong  
Cathy Bollinger  
Cathy Born  
Pat Gates  
Marian Iversen  
Pam Kanuch  
Ray Loveland  
Diane McKee  
Bev Muffy  
Bonnie Pedrini  
Katy Weisenberger  
Marvel Welch

*In addition to the regular volunteers listed above, Joslyn Art Museum thanks the "special occasion" volunteers who gave of their time and talents for exhibitions, music series, and other special programs throughout the year. Thank you!*

*Joslyn Art Museum extends a sincere apology to anyone whose name may have been inadvertently omitted from the Volunteers, Donors, Giving Societies, and Patron and Contributor Members lists.*

## FINANCIAL STATEMENTS

### Combined Statement of Financial Position December 31, 2007

#### Assets

Cash and cash equivalents	\$	2,630,854
Accrued interest receivable		186,836
Receivables		64,093
Museum shop inventory		265,841
Prepaid expenses and other assets		142,056
Contributions receivable		7,362,411
Beneficial interest in charitable remainder trust		4,000,000
Notes receivable		1,000,000
Funds on deposit under bond resolution		1,117,167
Investments		28,200,601
Property, net		26,599,343
Art collection		44,550,384
Assets held under deferred compensation program		458,813
Total assets	\$	<u>116,578,399</u>

#### Liabilities and Net Assets

##### Liabilities:

Accounts payable and accrued liabilities	\$	668,825
Bonds payable		5,500,000
Payable under deferred compensation program		458,813
Total liabilities		<u>6,627,638</u>

##### Net assets:

###### Unrestricted:

Undesignated	73,888,478
Designated by Board	7,170,332

###### Donor restricted:

Temporarily	17,433,465
Permanently	11,458,486

Total net assets	<u>109,950,761</u>
Total liabilities and net assets	\$ <u>116,578,399</u>

Combined Statement of Activities  
Year ended December 31, 2007

		Unrestricted	Temporarily restricted	Permanently restricted	Total
Revenues:					
Contributions and grants	\$	2,345,672	13,122,917	25,000	15,493,589
Contributions of art		285,475	—	—	285,475
Admissions		170,703	—	—	170,703
Memberships		301,394	—	—	301,394
Bodmer Society		155,210	—	—	155,210
Contemporary Art Society		33,350	—	—	33,350
Education programs		72,101	—	—	72,101
Auxiliary services:					
Food service and facility rental		595,823	—	—	595,823
Museum shop		387,904	—	—	387,904
Association groups		189,654	—	—	189,654
Music and general programs		156,959	—	—	156,959
Interest and investment income		992,712	237,586	16,143	1,246,441
Realized gain on investments		7,971	48,083	—	56,054
Loss on disposal of fixed assets		(187,125)	—	—	(187,125)
Unrealized gain (loss) on investments		(1,718,041)	29,463	—	(1,688,578)
Miscellaneous		60,562	—	—	60,562
Net assets released from restrictions:					
Satisfaction of operating restrictions		27,000	(27,000)	—	—
Satisfaction of program restrictions		1,966,751	(1,966,751)	—	—
Total revenues		5,844,075	11,444,298	41,143	17,329,516
Expenses:					
Administration		1,455,878	—	—	1,455,878
Curatorial		1,392,270	—	—	1,392,270
Education		886,091	—	—	886,901
Development		656,274	—	—	656,274
Auxiliary services		797,729	—	—	797,729
Physical plant		1,537,082	—	—	1,537,082
Depreciation		347,572	—	—	347,572
Total expenses		7,072,896	—	—	7,072,896
Change in net assets		(1,228,821)	11,444,298	41,143	10,256,620
Net assets, beginning of year		82,287,631	5,989,167	11,417,343	99,694,141
Net assets, end of year	\$	81,058,810	17,433,465	11,458,486	109,950,761

## STAFF

as of December 31, 2007

### Office of the Director & Joslyn Art Museum Foundation

J. Brooks Joyner  
Director  
Frances Osugi  
Administrative Assistant  
Sandra Reding  
President of the Joslyn Art  
Museum Foundation  
Sharon Latham  
Executive Assistant –  
Joslyn Art Museum  
Foundation President

### External Affairs

Linda Rajcevic  
Deputy Director for  
External Affairs  
Jennifer Gleason  
External Affairs Assistant

### Marketing & Public Relations

Julie Berger  
Marketing Manager  
Amy Rummel  
Communications Manager  
Kathryn Quinn  
Visitor & Volunteer  
Services Coordinator  
Karla Lechtenberger\*  
Visitor Services Assistant  
Margaret Lim  
Music Series Coordinator\*

### Events

JoAnn Evon  
Events Director  
Candace Tielebein  
Events Coordinator  
Randy Figura  
Technical Director-  
Stage/AV  
Greg Peteler  
Assistant Technical  
Director-Stage/AV

### Hitchcock Museum Shop

Jane Precella  
Director of the  
Museum Shop  
Katherine Gazzetta  
Museum Shop  
Assistant Manager\*  
Bridget O'Donnell  
Museum Shop Specialist/  
Weekend Supervisor\*  
Jennifer Batko  
Ally Gumbiner  
Sallie Rada  
Eleanore Tiehen  
Museum Shop Sales  
Associates\*

### Museum Collections & Programs

Anne El-Omami  
Deputy Director for Museum  
Collections & Programs

#### Curatorial

John Wilson, Ph.D.  
Senior Curator of Collections  
Ruby C. Hagerbaumer  
Coordinator of Curatorial  
Projects  
Peter Konin  
Librarian  
Stephen S. Witte  
Editorial Coordinator,  
Maximilian Journals  
Project  
Marsha V. Gallagher  
Director of the Maximilian  
Journals Project\*

#### Collections & Exhibitions Management

Theodore W. James  
Collections & Exhibitions  
Manager  
Penelope Smith  
Registrar/Assistant Curator of  
Prints & Drawings  
Michael Tegland  
Preparator  
Adam Findley  
Assistant Preparator

### Education, Academic Affairs, & Public Programs

Nancy Round  
Associate Curator of  
Education–Youth, Family,  
& Community Programs  
Susie Severson  
Associate Curator of  
Education–Adult &  
Special Programs  
Laura Huntimer  
Assistant Curator for  
Educational and  
Interpretive Media  
Andrew Smith  
Studio Teaching Specialist  
Audrey Labens  
Education Tour &  
Program Coordinator  
Matt Clouse  
Education Specialist for  
Outreach and Visitor  
Resources  
Matt Casey  
Eleanore Tiehen  
Education Assistants/Scott  
Education Technology  
Gallery\*

Claudia Alvarez  
James Anderson  
Fairouz Bishara  
Sarah Brogren  
Stephanie Carlson-Pruch  
Valery Copeland  
Lester Kills Crow  
Angie Fischer  
Deb Groesser  
Jennifer Gunn  
Amy Haney  
Carey Hernandez  
Leslie Iwai  
CaSandra Johnson  
Liz Langdon  
Diane Lounsberry-Williams  
Matt Lowe  
Dave Manriquez  
Sarah McKee  
Linda Meigs  
John Miller  
Rachel Mindrup  
Troy Muller  
Gloria Nelson  
Bridget O'Donnell  
Jean Pantaleone  
Nick Pella  
Kristin Pluhacek  
Alissa Popken  
Laura Ross  
Julie Ryan  
Doug Schroeder  
Jaci Siemers  
Therese Straseski  
Ron Sykes  
Amanda Tack  
Chizuko Takechi  
Eleanore Tiehen  
John Thein

Teachers, Assistants, Aides,  
& Interns for the Museum  
and/or its Scott Education  
Technology Gallery\*

### Finance & Administration

Miranda Templeman  
Chief Financial Officer  
Kathleen Cepuran  
Accounts Payable  
Specialist  
Sherri Urbanek  
Accounts Receivable  
Specialist  
Chuck Chylinski  
Human Resources Manager

#### Information Systems

Timothy Northrup  
IS Manager  
Jason Combs  
Network/Web Administrator

### Development

Sabrina Weiss  
Director of Development  
Christi Churchill  
Director of Corporate and  
Foundation Relations  
Wendy Hamilton  
Director of Membership  
Kacie Gerard  
Membership Specialist

### Facility Management

Steven Tlsty  
Facility Manager  
*Building and Grounds*  
Jay Schwartzbeck  
Building Engineer  
Scott Orr  
Building & Grounds  
Manager  
James Coffin  
Leonard Pock  
Assistant Custodial  
Managers  
Michael Anderla  
Paul Daniel\*  
Jacinto Gonzalez  
David Larsen  
Building Workers

#### Protection

Ronnie Rivers  
Protection Administrator  
Tyrone Eure  
Douglas Gunn  
William Lasky  
Rex Reason  
Protection Supervisors  
Amanda Devine  
Protection Officer/  
Visitor Services Specialist  
Lisa Nabity  
Carl Overfield  
Kari Skadberg  
Protection Officers/  
Visitor Services  
Representatives  
Michael Andsager  
Bomani Blackamore\*  
Eric deLaubenfels\*  
Doug Davis\*  
Jennifer Gunn\*  
Linda Stapleton  
Merry Stapleton  
Protection Officers

\*Part-time





2200 Dodge Street  
Omaha, Nebraska 68102-1292

Non-Profit Org.  
U.S. Postage  
PAID  
Permit No. 88  
Omaha, Nebraska